



BX **New "C" Generation** Condensing Units

PRODUCT DATA & SPECIFICATIONS

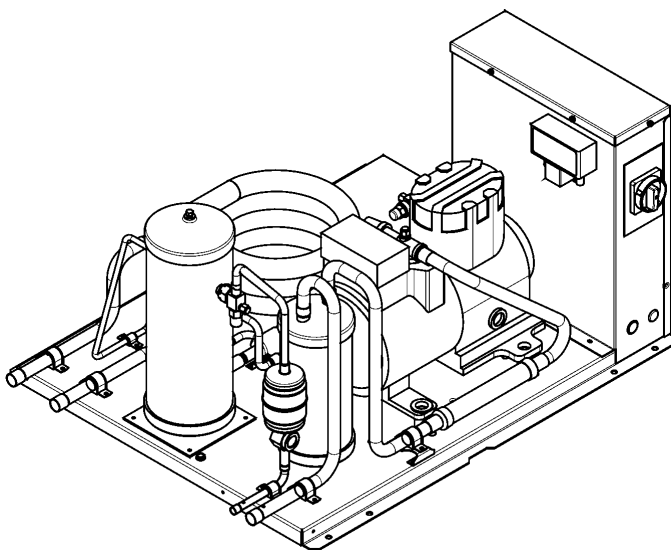
Bulletin B40-BXC-PDS
Part # 1107226


60
Hz

Indoor Water Cooled Coaxial
Hermetic, Scroll and
Semi-Hermetic
Condensing Units

**1/2 to 6 HP -
High, Medium and Low
Temperature Refrigeration**

	PRODUCT SUPPORT	scan:
	web: b-rp.ca/bx	
	email: rcu-wccu@b-rp.ca	
	call: 1-844-893-3222 x523	



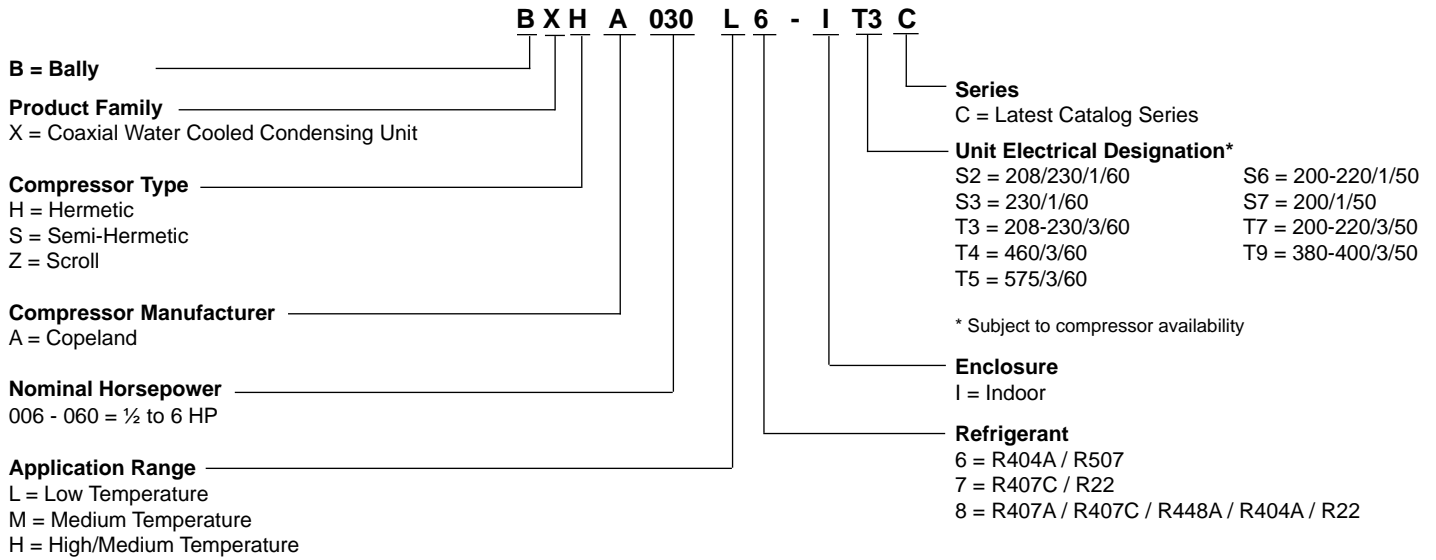


INCLUDES RATINGS FOR
LOW GWP
REFRIGERANTS

CONTENTS

	Page
Nomenclature.....	2
Features and Options.....	2
Capacity Data (Imperial and <i>Metric</i>).....	3 - 14
Electrical Data.....	15 - 18
Dimensional Data.....	19 - 20
Specifications.....	21 - 22
Wiring Diagrams.....	23 - 25
Product Support Resources.....	BACK

NOMENCLATURE



STANDARD FEATURES

- Painted electrical control box with compressor contactor and fused control circuit
- Pre-formed piping
- Brass valves (BXH, BXZ)
- Base valve on suction line (BXH)
- Suction service valve (BXS, BXZ)
- Copper tubing secured with cushion clamps
- Semi-hermetics spring mounted with vibration absorber (BXS)
- Hermetics/scrolls rubber mounted (BXH, BXZ)
- Co-Axial condenser
- Receiver with fusible plug and liquid shut off valve
- Adjustable dual high / low pressure control with flex hoses
- Each unit subjected to a thorough leak test with Helium leak-detectors
- Units are shipped with Helium holding charge
- Liquid injection (Low temperature scroll only) (BXZ)
- Water reg valve (shipped loose)

AVAILABLE OPTIONS

- Suction accumulator
- Suction accumulator with boil-out coil
- Discharge line check valve
- Oil separator
- Oil separator c/w oil return filter & solenoid valve
- Receiver inlet ball valve
- Over-sized receiver
- Sealed liquid line filter drier & sight glass
- Ball valve – liquid line (shipped loose)
- Insulated suction lines
- Liquid line solenoid valve (with standard 230 volt coil) – shipped loose
- Compressor circuit breaker
- Defrost heater contactor c/w fuse block
- Evaporator fan contactor c/w fuse block
- Disconnect switch
- Disconnect fusing
- Pump down toggle switch
- Lock out control circuit – Liquid solenoid valve with separate HP and LP controls
- Time delay relay for compressor
- Mechanical time clock
- Electronic voltage/phase monitor

CAPACITY DATA - R448A
MEDIUM TEMPERATURE

Capacity Rating Conditions: 85°F (29.4°C) Entering Water, 105°F (40.6°C) Condensing, 0°F (0°C) Subcooling

MODEL BXHA	SATURATED SUCTION TEMPERATURE °F (°C)										
		-10 (-23.3)	-5 (-20.6)	0 (-17.8)	5 (-15)	10 (-12.2)	15 (-9.4)	20 (-6.7)	25 (-3.9)		
BXHA006M8 Compressor: RST45C1E	BTU/H (Watts)	2260 (660)	2610 (760)	3010 (880)	3460 (1010)	3980 (1170)	4560 (1340)	5210 (1530)	5950 (1740)		
	GPM (L/min)	1.0 (3.8)	1.0 (3.6)	1.0 (3.6)	1.0 (3.8)	1.1 (4.2)	1.3 (5)	1.6 (6.2)	2.1 (8)		
	PSIG (kPa)	0.6 (4.4)	0.6 (4.1)	0.6 (4.1)	0.6 (4.4)	0.7 (5.1)	1.0 (6.7)	1.4 (9.4)	2.1 (14.2)		
BXHA008M8 Compressor: RST55C1E	BTU/H (Watts)	2730 (800)	3170 (930)	3660 (1070)	4220 (1240)	4850 (1420)	5560 (1630)	6350 (1860)	7250 (2120)		
	GPM (L/min)	0.6 (2.1)	0.6 (2.2)	0.6 (2.3)	0.7 (2.6)	0.8 (3)	1.0 (3.6)	1.2 (4.6)	1.6 (5.9)		
	PSIG (kPa)	0.3 (2)	0.3 (2.1)	0.3 (2.3)	0.4 (2.8)	0.5 (3.7)	0.7 (5.1)	1.1 (7.4)	1.6 (11)		
BXHA009M8 Compressor: RST64C1E	BTU/H (Watts)	3610 (1060)	4200 (1230)	4880 (1430)	5650 (1660)	6510 (1910)	7280 (2130)	8150 (2390)	9070 (2660)		
	GPM (L/min)	0.7 (2.5)	0.8 (2.9)	0.9 (3.5)	1.2 (4.5)	1.4 (5.3)	1.8 (6.8)	2.3 (8.5)	2.8 (10.6)		
	PSIG (kPa)	0.4 (2.7)	0.5 (3.5)	0.7 (4.9)	1.0 (7.2)	1.4 (9.5)	2.0 (13.9)	2.9 (19.9)	4.1 (28.2)		
BXHA010M8 Compressor: RST70C1E	BTU/H (Watts)	3790 (1110)	4430 (1300)	5120 (1500)	5860 (1720)	6640 (1950)	7480 (2190)	8370 (2450)	9320 (2730)		
	GPM (L/min)	0.6 (2.5)	0.8 (2.9)	0.9 (3.5)	1.2 (4.4)	1.4 (5.5)	1.8 (6.9)	2.3 (8.6)	2.8 (10.7)		
	PSIG (kPa)	0.4 (2.6)	0.5 (3.5)	0.7 (4.8)	1.0 (6.9)	1.4 (9.9)	2.1 (14.2)	2.9 (20.2)	4.1 (28.5)		
BXHA011M8 Compressor: RST80C1E	BTU/H (Watts)	4480 (1310)	5200 (1520)	5980 (1750)	6820 (2000)	7710 (2260)	8680 (2540)	9710 (2850)	10810 (3170)		
	GPM (L/min)	0.8 (3.1)	1.0 (3.9)	1.3 (4.9)	1.6 (6.2)	2.1 (7.9)	2.6 (10)	3.3 (12.6)	4.1 (15.6)		
	PSIG (kPa)	0.6 (3.8)	0.7 (5.1)	1.0 (7.2)	1.7 (11.6)	2.4 (16.6)	3.5 (24)	5.0 (34.5)	7.2 (49.7)		
BXHA013M8 Compressor: RST97C1E	BTU/H (Watts)	5130 (1500)	5970 (1750)	6880 (2020)	7840 (2300)	8860 (2600)	9930 (2910)	11050 (3240)	12230 (3580)		
	GPM (L/min)	1.3 (4.9)	1.5 (5.8)	1.8 (7)	2.2 (8.4)	2.7 (10.1)	3.2 (12.2)	3.9 (14.6)	4.6 (17.4)		
	PSIG (kPa)	0.3 (2.1)	0.4 (2.9)	0.6 (4)	0.8 (5.6)	1.1 (7.8)	1.6 (10.7)	2.1 (14.6)	2.9 (19.7)		

For R449A, use R448A data.

CAPACITY DATA - R407C
HIGH / MEDIUM TEMPERATURE

Capacity Rating Conditions: 85°F (29.4°C) Entering Water, 110°F (43.3°C) Condensing, 0°F (0°C) Subcooling

MODEL BXHA	SATURATED SUCTION TEMPERATURE °F (°C)									
		10 (-12.2)	15 (-9.4)	20 (-6.7)	25 (-3.9)	30 (-1.1)	35 (1.7)	40 (4.4)	45 (7.2)	
BXHA015H7 Compressor: CR18K6E	BTU/H (Watts)	7570 (2220)	8990 (2630)	10500 (3080)	12100 (3550)	13700 (4020)	15500 (4540)	17500 (5130)	19600 (5740)	
	GPM (L/min)	1.2 (4.5)	1.4 (5.3)	1.6 (6.1)	1.8 (6.8)	2.0 (7.6)	2.6 (9.8)	3.4 (12.8)	4.4 (16.5)	
	PSIG (kPa)	0.5 (3.5)	0.6 (4)	0.7 (4.5)	0.7 (5.1)	0.8 (5.8)	1.2 (8.2)	1.8 (12.1)	2.7 (18.5)	
BXA020H7 Compressor: CR24K6E	BTU/H (Watts)	9590 (2810)	11400 (3340)	13500 (3960)	15700 (4600)	18300 (5360)	21200 (6210)	24500 (7180)	28200 (8260)	
	GPM (L/min)	1.5 (5.7)	1.7 (6.4)	1.9 (7.3)	2.8 (10.7)	4.0 (15)	5.4 (20.4)	7.2 (27.1)	9.4 (35.7)	
	PSIG (kPa)	0.6 (3.9)	0.7 (4.6)	0.8 (5.5)	1.4 (9.5)	2.3 (15.7)	3.7 (25.3)	5.9 (40.3)	9.3 (64)	
BXA025H7 Compressor: CR32K6E	BTU/H (Watts)	12400 (3630)	14800 (4340)	17400 (5100)	20400 (5980)	23700 (6950)	27400 (8030)	31700 (9290)	36500 (10700)	
	GPM (L/min)	2.0 (7.6)	2.2 (8.3)	2.5 (9.3)	3.4 (12.7)	4.6 (17.6)	6.4 (24.4)	8.9 (33.6)	12.2 (46.2)	
	PSIG (kPa)	0.3 (2)	0.4 (2.7)	0.5 (3.7)	1.1 (7.3)	1.9 (13.3)	3.4 (23.4)	5.8 (40.3)	10.0 (69)	
BXHA030H7 Compressor: CR38K6E	BTU/H (Watts)	15400 (4510)	18300 (5360)	21600 (6330)	25200 (7390)	29000 (8500)	33100 (9700)	37300 (10930)	41700 (12220)	
	GPM (L/min)	3.2 (12)	3.7 (13.9)	4.4 (16.8)	5.6 (21.1)	7.1 (26.9)	9.0 (34.2)	11.3 (43)	14.1 (53.3)	
	PSIG (kPa)	0.8 (5.6)	1.0 (6.9)	1.4 (9.3)	1.9 (13.4)	2.9 (19.9)	4.3 (29.8)	6.4 (44.4)	9.5 (65.2)	
BXHA035H7 Compressor: CR42K6E	BTU/H (Watts)	17300 (5070)	20600 (6040)	24300 (7120)	28400 (8320)	32700 (9580)	37300 (10930)	42100 (12340)	47100 (13800)	
	GPM (L/min)	2.8 (10.6)	3.0 (11.4)	3.4 (12.9)	3.9 (14.8)	4.4 (16.7)	5.7 (21.7)	7.4 (28)	9.4 (35.7)	
	PSIG (kPa)	2.1 (14.5)	2.2 (14.9)	2.3 (15.6)	2.4 (16.4)	2.5 (17.4)	2.9 (20)	3.4 (23.7)	4.2 (28.8)	
BXHA040H7 Compressor: CR53KQE	BTU/H (Watts)	22700 (6650)	26900 (7880)	31300 (9170)	36200 (10610)	41400 (12130)	47200 (13830)	53500 (15680)	60400 (17700)	
	GPM (L/min)	3.5 (13.2)	3.8 (14.4)	4.5 (17)	5.0 (18.9)	5.9 (22.2)	7.9 (29.8)	10.6 (40.3)	14.3 (54.2)	
	PSIG (kPa)	0.1 (0.4)	0.1 (0.9)	0.3 (2.4)	0.5 (3.4)	0.8 (5.4)	1.5 (10.5)	2.7 (18.8)	4.7 (32.2)	
BXHA050H7 Compressor: CRNQ-050E	BTU/H (Watts)	28100 (8240)	32700 (9580)	37500 (10990)	42600 (12480)	48300 (14160)	54600 (16000)	61700 (18080)	69800 (20460)	
	GPM (L/min)	4.6 (17.4)	5.5 (20.9)	7.0 (26.6)	9.1 (34.6)	12.1 (45.7)	16.0 (60.7)	21.4 (81)	28.7 (108.5)	
	PSIG (kPa)	1.4 (9.8)	1.4 (10)	1.5 (10.7)	1.8 (12.6)	2.5 (17)	3.8 (26.4)	6.5 (45.1)	11.8 (81.5)	

NOTE: The capacities shown above are rated at dew point. The dew point is a saturation point and is the condition (pressure and temperature) at which a gas begins to condense. Since R407C has significant glide, the saturated gas and saturated liquid temperatures are not the same. It is important that all components of a system are selected correctly

CAPACITY DATA - **R407C**

HIGH / MEDIUM TEMPERATURE

Capacity Rating Conditions: 85°F (29.4°C) Entering Water, 110°F (43.3°C) Condensing, 0°F (0°C) Subcooling

MODEL BXHA	SATURATED SUCTION TEMPERATURE °F (°C)									
		10 (-12.2)	15 (-9.4)	20 (-6.7)	25 (-3.9)	30 (-1.1)	35 (1.7)	40 (4.4)	45 (7.2)	
BXHA006M8 Compressor: RST45C1E	BTU/H (Watts)	3760 (1100)	4330 (1270)	4950 (1450)	5640 (1650)	6390 (1870)	7190 (2110)	8060 (2360)	8990 (2630)	
	GPM (L/min)	0.9 (3.4)	1.0 (3.7)	1.1 (4.2)	1.3 (4.9)	1.6 (6)	2.0 (7.5)	2.5 (9.4)	3.1 (11.8)	
	PSIG (kPa)	0.5 (3.8)	0.6 (4.2)	0.7 (5.1)	1.0 (6.6)	1.3 (9)	1.9 (12.8)	2.7 (18.5)	3.9 (27.2)	
BXA008M8 Compressor: RST55C1E	BTU/H (Watts)	4620 (1350)	5290 (1550)	6020 (1760)	6820 (2000)	7710 (2260)	8680 (2540)	9740 (2850)	10910 (3200)	
	GPM (L/min)	0.7 (2.6)	0.8 (2.9)	0.9 (3.3)	1.0 (3.9)	1.2 (4.7)	1.5 (5.8)	1.9 (7.1)	2.3 (8.8)	
	PSIG (kPa)	0.4 (2.8)	0.5 (3.5)	0.6 (4.4)	0.8 (5.8)	1.1 (7.8)	1.5 (10.7)	2.2 (14.8)	3.0 (20.9)	
BXA009M8 Compressor: RST64C1E	BTU/H (Watts)	6060 (1780)	6930 (2030)	7890 (2310)	8940 (2620)	10100 (2960)	11010 (3230)	12360 (3620)	13830 (4050)	
	GPM (L/min)	1.0 (3.6)	1.2 (4.4)	1.4 (5.4)	1.8 (6.7)	2.0 (7.7)	2.5 (9.4)	3.1 (11.7)	3.9 (14.6)	
	PSIG (kPa)	0.7 (5.1)	1.0 (7)	1.4 (9.6)	2.0 (13.4)	2.4 (16.8)	3.3 (23.1)	4.8 (33.1)	6.9 (47.8)	
BXHA010M8 Compressor: RST70C1E	BTU/H (Watts)	6260 (1830)	7120 (2090)	8050 (2360)	9070 (2660)	10200 (2990)	11430 (3350)	12790 (3750)	14290 (4190)	
	GPM (L/min)	1.0 (3.7)	1.2 (4.5)	1.4 (5.4)	1.8 (6.6)	2.2 (8.2)	2.7 (10)	3.3 (12.4)	4.0 (15.2)	
	PSIG (kPa)	0.8 (5.4)	1.0 (7.2)	1.4 (9.7)	1.9 (13.4)	2.7 (18.5)	3.7 (25.9)	5.3 (36.4)	7.5 (51.5)	
BXHA011M8 Compressor: RST80C1E	BTU/H (Watts)	7280 (2130)	8280 (2430)	9370 (2750)	10560 (3090)	11870 (3480)	13310 (3900)	14890 (4360)	16640 (4880)	
	GPM (L/min)	1.3 (5)	1.6 (6.2)	2.0 (7.6)	2.5 (9.4)	3.1 (11.6)	3.8 (14.4)	4.7 (17.7)	5.8 (21.8)	
	PSIG (kPa)	1.2 (8.5)	1.7 (11.8)	2.4 (16.5)	3.4 (23.2)	4.8 (32.8)	6.8 (46.7)	9.7 (66.6)	13.9 (95.5)	
BXHA013M8 Compressor: RST97C1E	BTU/H (Watts)	8270 (2420)	9400 (2750)	10640 (3120)	11990 (3510)	13470 (3950)	15110 (4430)	16900 (4950)	18880 (5530)	
	GPM (L/min)	1.6 (6.2)	1.9 (7.4)	2.3 (8.9)	2.8 (10.7)	3.4 (13)	4.2 (15.9)	5.1 (19.4)	6.3 (23.8)	
	PSIG (kPa)	0.5 (3.3)	0.6 (4.5)	0.9 (6.1)	1.2 (8.6)	1.7 (12)	2.5 (16.9)	3.5 (24.1)	5.0 (34.4)	

CAPACITY DATA - **R404A R507**

MEDIUM TEMPERATURE

Capacity Rating Conditions: 85°F (29.4°C) Entering Water, 105°F (40.6°C) Condensing, 0°F (0°C) Subcooling

MODEL BXHA	SATURATED SUCTION TEMPERATURE °F (°C)										
		-10 (-23.3)	-5 (-20.6)	0 (-17.8)	5 (-15.0)	10 (-9.4)	20 (-6.7)	25 (-3.9)	30 (-1.1)		
BXHA006M8 Compressor: RST45C1E	BTU/H (Watts)	2400 (700)	2780 (810)	3190 (930)	4130 (1210)	4640 (1360)	5190 (1520)	5780 (1690)	6400 (1880)		
	GPM (L/min)	0.6 (2.1)	0.6 (2.3)	0.7 (2.6)	0.9 (3.4)	1.0 (3.9)	1.2 (4.6)	1.4 (5.3)	1.6 (6.2)		
	PSIG (kPa)	0.3 (1.8)	0.3 (2)	0.4 (2.4)	0.5 (3.7)	0.7 (4.6)	0.9 (5.9)	1.1 (7.5)	1.4 (9.5)		
BXHA008M8 Compressor: RST55C1E	BTU/H (Watts)	2880 (840)	3370 (990)	3880 (1140)	5030 (1470)	5660 (1660)	6330 (1860)	7030 (2060)	7790 (2280)		
	GPM (L/min)	0.6 (2.3)	0.6 (2.3)	0.6 (2.4)	0.8 (2.9)	0.9 (3.3)	1.0 (3.7)	1.1 (4.3)	1.3 (5.1)		
	PSIG (kPa)	0.3 (2.4)	0.4 (2.4)	0.4 (2.6)	0.5 (3.5)	0.6 (4.3)	0.8 (5.4)	1.0 (6.8)	1.3 (8.8)		
BXHA009M8 Compressor: RST64C1E	BTU/H (Watts)	3940 (1150)	4540 (1330)	5190 (1520)	6610 (1940)	7380 (2160)	8190 (2400)	9050 (2650)	9950 (2920)		
	GPM (L/min)	0.7 (2.6)	0.7 (2.8)	0.8 (3.2)	1.1 (4.3)	1.3 (5)	1.6 (6)	1.9 (7.2)	2.3 (8.6)		
	PSIG (kPa)	0.4 (2.8)	0.5 (3.3)	0.6 (4.1)	1.0 (6.6)	1.3 (8.7)	1.7 (11.4)	2.2 (15.1)	2.9 (20)		
BXHA010M8 Compressor: RST70C1E	BTU/H (Watts)	4010 (1180)	4640 (1360)	5330 (1560)	6840 (2000)	7670 (2250)	8550 (2510)	9480 (2780)	10450 (3060)		
	GPM (L/min)	0.7 (2.5)	0.7 (2.8)	0.8 (3.2)	1.1 (4.3)	1.4 (5.2)	1.6 (6.2)	1.9 (7.3)	2.3 (8.7)		
	PSIG (kPa)	0.4 (2.8)	0.5 (3.3)	0.6 (4.1)	1.0 (6.8)	1.3 (9)	1.7 (11.9)	2.3 (15.7)	3.0 (20.6)		
BXHA011M8 Compressor: RST80C1E	BTU/H (Watts)	4780 (1400)	5490 (1610)	6270 (1840)	7980 (2340)	8920 (2610)	9920 (2910)	10970 (3210)	12080 (3540)		
	GPM (L/min)	0.8 (3)	0.9 (3.5)	1.1 (4.1)	1.6 (5.9)	1.9 (7.1)	2.3 (8.6)	2.7 (10.3)	3.2 (12.3)		
	PSIG (kPa)	0.5 (3.7)	0.7 (4.7)	0.9 (6.2)	1.6 (11)	2.2 (14.9)	2.9 (20)	3.9 (26.9)	5.2 (36.1)		
BXHA013M8 Compressor: RST97C1E	BTU/H (Watts)	5450 (1600)	6280 (1840)	7180 (2100)	9160 (2680)	10220 (3000)	11330 (3320)	12470 (3650)	13640 (4000)		
	GPM (L/min)	1.1 (4)	1.2 (4.4)	1.3 (5)	1.8 (6.7)	2.1 (7.9)	2.5 (9.4)	2.9 (11)	3.4 (12.9)		
	PSIG (kPa)	0.2 (1.4)	0.2 (1.7)	0.3 (2.1)	0.5 (3.8)	0.7 (5.1)	1.0 (6.8)	1.3 (9)	1.7 (11.8)		

BXH

CAPACITY DATA - R404A R507

EXTENDED MEDIUM TEMPERATURE

60Hz

Capacity Rating Conditions: 85°F (29.4°C) Entering Water, 105°F (40.6°C) Condensing, 0°F (0°C) Subcooling

MODEL BXHA	SATURATED SUCTION TEMPERATURE °F (°C)										
	-25 (-31.7)	-20 (-28.9)	-10 (-23.3)	0 (-17.8)	10 (-12.2)	20 (-6.7)	25 (-3.9)	30 (-1.1)			
BXHA015M6 Compressor: CS10K6E	BTU/H (Watts)	1970 (580)	2710 (790)	4580 (1340)	6930 (2030)	9710 (2850)	12900 (3780)	14600 (4280)	16300 (4780)		
	GPM (L/min)	0.0 (0.1)	0.1 (0.4)	0.3 (1.3)	0.8 (3)	1.5 (5.6)	2.5 (9.4)	3.1 (11.7)	3.8 (14.3)		
	PSIG (kPa)	0.1 (0.7)	0.1 (0.7)	0.1 (0.5)	0.2 (1.4)	0.5 (3.4)	1.1 (7.4)	1.5 (10.5)	2.1 (14.7)		
BXHA020M6 Compressor: CS12K6E	BTU/H (Watts)	2610 (760)	3500 (1030)	5670 (1660)	8340 (2440)	11500 (3370)	15100 (4430)	17100 (5010)	19200 (5630)		
	GPM (L/min)	0.1 (0.4)	0.2 (0.7)	0.6 (2.1)	1.2 (4.4)	2.1 (8.1)	3.5 (13.2)	4.3 (16.4)	5.3 (20.1)		
	PSIG (kPa)	0.1 (0.7)	0.1 (0.7)	0.1 (0.9)	0.3 (2.4)	0.8 (5.8)	1.9 (12.8)	2.7 (18.5)	3.8 (26.2)		
BXHA025M6 Compressor: CS14K6E	BTU/H (Watts)	3780 (1110)	4750 (1390)	7160 (2100)	10100 (2960)	13600 (3990)	17500 (5130)	19600 (5740)	21800 (6390)		
	GPM (L/min)	0.2 (0.8)	0.3 (1.2)	0.7 (2.6)	1.3 (5)	2.3 (8.7)	3.7 (14.1)	4.6 (17.6)	5.7 (21.4)		
	PSIG (kPa)	0.1 (0.4)	0.1 (0.7)	0.2 (1.6)	0.5 (3.4)	1.0 (7.2)	2.1 (14.4)	2.9 (20)	4.0 (27.5)		
BXHA030M6 Compressor: CS18K6E	BTU/H (Watts)	4530 (1330)	5590 (1640)	8630 (2530)	12700 (3720)	17500 (5130)	22900 (6710)	25700 (7530)	28500 (8350)		
	GPM (L/min)	0.1 (0.3)	0.1 (0.5)	0.4 (1.4)	0.9 (3.4)	1.9 (7.1)	3.5 (13.3)	4.6 (17.4)	5.8 (22.1)		
	PSIG (kPa)	0.1 (0.7)	0.1 (0.7)	0.1 (0.5)	0.2 (1.2)	0.4 (3.1)	1.0 (7.2)	1.5 (10.6)	2.2 (15.3)		
BXHA035M6 Compressor: CS20K6E	BTU/H (Watts)	4580 (1340)	6420 (1880)	10100 (2960)	14200 (4160)	19200 (5630)	25600 (7500)	29500 (8650)	34000 (9960)		
	GPM (L/min)	0.1 (0.4)	0.2 (0.8)	0.6 (2.2)	1.2 (4.7)	2.5 (9.5)	4.9 (18.6)	6.9 (26.2)	9.7 (36.8)		
	PSIG (kPa)	0.1 (0.7)	0.1 (0.7)	0.1 (0.8)	0.3 (1.8)	0.6 (4.5)	1.7 (11.8)	2.9 (19.9)	5.0 (34.8)		
BXHA040M6 Compressor: CS27K6E	BTU/H (Watts)	7530 (2210)	9410 (2760)	13800 (4040)	19200 (5630)	25800 (7560)	33800 (9910)	38400 (11250)	43300 (12690)		
	GPM (L/min)	0.8 (2.9)	1.1 (4.1)	2.0 (7.5)	3.4 (12.8)	5.4 (20.5)	8.4 (31.9)	10.4 (39.2)	12.6 (47.8)		
	PSIG (kPa)	0.1 (0.8)	0.2 (1.2)	0.4 (2.7)	0.8 (5.7)	1.7 (12)	3.6 (24.8)	5.1 (35.5)	7.3 (50.3)		
BXHA050M6 Compressor: CS33K6E	BTU/H (Watts)	9590 (2810)	10800 (3170)	15300 (4480)	21900 (6420)	29800 (8730)	38300 (11220)	42600 (12480)	46800 (13720)		
	GPM (L/min)	0.7 (2.5)	0.8 (3.1)	1.5 (5.7)	2.8 (10.6)	4.8 (18)	7.3 (27.6)	8.7 (33)	10.1 (38.3)		
	PSIG (kPa)	0.1 (0.7)	0.1 (0.9)	0.3 (1.8)	0.5 (3.7)	1.1 (7.3)	1.9 (13.1)	2.5 (17)	3.1 (21.2)		

CAPACITY DATA - R404A R507

LOW TEMPERATURE

Capacity Rating Conditions: 85°F (29.4°C) Entering Water, 105°F (40.6°C) Condensing, 0°F (0°C) Subcooling

MODEL BXHA	SATURATED SUCTION TEMPERATURE °F (°C)										
	-30 (-34.4)	-20 (-28.9)	-10 (-23.3)	-5 (-20.6)	0 (-17.8)	5 (-15)	10 (-12.2)				
BXHA006L6 Compressor: RFT22C1E	BTU/H (Watts)	1310 (380)	1890 (550)	2580 (760)	2960 (870)	3380 (990)	3830 (1120)	4300 (1260)			
	GPM (L/min)	0.2 (0.9)	0.4 (1.6)	0.7 (2.7)	0.9 (3.3)	1.1 (4.1)	1.3 (5.1)	1.6 (6.1)			
	PSIG (kPa)	0.1 (0.5)	0.1 (1)	0.3 (2)	0.4 (2.8)	0.6 (3.8)	0.8 (5.2)	1.0 (7.1)			
BXHA008L6 Compressor: RFT26C1E	BTU/H (Watts)	1670 (490)	2340 (690)	3140 (920)	3600 (1060)	4100 (1200)	4610 (1350)	5180 (1520)			
	GPM (L/min)	0.5 (1.9)	0.8 (3)	1.2 (4.6)	1.5 (5.6)	1.8 (6.8)	2.2 (8.2)	2.6 (9.8)			
	PSIG (kPa)	0.2 (1.2)	0.3 (2.3)	0.7 (4.5)	0.9 (6.2)	1.2 (8.5)	1.7 (11.6)	2.3 (15.6)			
BXHA010L6 Compressor: CF04K6E	BTU/H (Watts)	2080 (610)	3570 (1050)	5310 (1560)	6370 (1870)	7590 (2220)	9020 (2640)	10700 (3140)			
	GPM (L/min)	0.4 (1.7)	0.9 (3.5)	1.7 (6.3)	2.2 (8.2)	2.8 (10.7)	3.7 (14)	4.8 (18.2)			
	PSIG (kPa)	0.2 (1.5)	0.6 (3.9)	1.4 (9.5)	2.2 (14.8)	3.4 (23.2)	5.3 (36.7)	8.5 (58.5)			
BXHA020L6 Compressor: CF06K6E	BTU/H (Watts)	3660 (1070)	5720 (1680)	8330 (2440)	9800 (2870)	11400 (3340)	13100 (3840)	14900 (4370)			
	GPM (L/min)	0.7 (2.5)	1.3 (4.8)	2.3 (8.6)	2.9 (11.2)	3.7 (14.1)	4.6 (17.6)	5.7 (21.4)			
	PSIG (kPa)	0.5 (3.4)	1.2 (8.3)	2.9 (20.1)	4.4 (30.6)	6.6 (45.4)	9.6 (66.2)	13.6 (93.9)			
BXHA025L6 Compressor: CF09K6E	BTU/H (Watts)	5820 (1710)	8810 (2580)	12400 (3630)	14500 (4250)	16700 (4890)	19100 (5600)	21600 (6330)			
	GPM (L/min)	0.8 (3)	1.7 (6.5)	3.2 (12.3)	4.3 (16.2)	5.5 (20.8)	6.9 (26.2)	8.6 (32.6)			
	PSIG (kPa)	0.2 (1.4)	0.6 (4.2)	1.7 (11.4)	2.6 (18)	4.0 (27.9)	6.1 (42.2)	9.1 (62.5)			
BXHA030L6 Compressor: CF12K6E	BTU/H (Watts)	7850 (2300)	11700 (3430)	16000 (4690)	18400 (5390)	21100 (6180)	24100 (7060)	27300 (8000)			
	GPM (L/min)	1.1 (4.3)	2.4 (9.1)	4.4 (16.8)	5.8 (22.1)	7.6 (28.7)	9.8 (37)	12.5 (47.4)			
	PSIG (kPa)	0.4 (2.8)	1.1 (7.6)	2.7 (18.7)	4.2 (28.9)	6.4 (44.4)	9.9 (68.2)	15.2 (104.9)			

CAPACITY DATA - **R448A** MEDIUM TEMPERATURE

Capacity Rating Conditions: 85°F (29.4°C) Entering Water, 105°F (40.6°C) Condensing, 0°F (0°C) Subcooling

MODEL BXSA		SATURATED SUCTION TEMPERATURE °F (°C)							
		-5 (-20.6)	0 (-17.8)	5 (-15)	10 (-12.2)	15 (-9.4)	20 (-6.7)		
BXSA010M8 Compressor: KARB-010E	BTU/H (Watts)	4490 (1320)	5220 (1530)	6090 (1780)	7020 (2060)	7950 (2330)	8780 (2570)		
	GPM (L/min)	1.4 (5.3)	1.5 (5.7)	1.7 (6.4)	2.2 (8.5)	2.9 (11)	3.6 (13.6)		
	PSIG (kPa)	1.4 (9.4)	1.5 (10.4)	1.8 (12.7)	2.9 (19.8)	4.3 (30)	6.2 (42.7)		
BXSA020M8 Compressor: KAKA-020E	BTU/H (Watts)	7260 (2130)	8410 (2460)	9840 (2880)	11410 (3340)	13010 (3810)	14510 (4250)		
	GPM (L/min)	1.3 (4.9)	1.4 (5.4)	1.7 (6.4)	2.2 (8.2)	2.8 (10.7)	3.6 (13.5)		
	PSIG (kPa)	0.5 (3.7)	0.6 (4)	0.7 (4.8)	0.9 (6.5)	1.3 (9.2)	1.9 (13.3)		
BXSA021M8 Compressor: ERCA-021E	BTU/H (Watts)	8010 (2350)	9550 (2800)	11270 (3300)	13130 (3850)	15110 (4430)	17170 (5030)		
	GPM (L/min)	2.2 (8.2)	2.5 (9.6)	3.1 (11.6)	3.8 (14.2)	4.6 (17.5)	5.6 (21)		
	PSIG (kPa)	0.9 (6.5)	1.2 (8.1)	1.5 (10.6)	2.1 (14.5)	2.9 (19.9)	3.9 (26.7)		
BXSA030M8 Compressor: ERFA-031E	BTU/H (Watts)	12060 (3530)	14270 (4180)	16790 (4920)	19540 (5730)	22440 (6580)	25420 (7450)		
	GPM (L/min)	2.6 (9.8)	3.0 (11.4)	3.4 (12.9)	3.8 (14.4)	4.6 (17.6)	6.2 (23.5)		
	PSIG (kPa)	0.6 (4.2)	0.8 (5.8)	1.1 (7.4)	1.3 (9.2)	1.9 (13.3)	3.2 (21.9)		

For R449A, use R448A data.

CAPACITY DATA - **R448A** LOW TEMPERATURE

Capacity Rating Conditions: 85°F (29.4°C) Entering Water, 105°F (40.6°C) Condensing, 0°F (0°C) Subcooling

MODEL BXSA		SATURATED SUCTION TEMPERATURE °F (°C)							
		-40 (-40)	-30 (-34.4)	-20 (-28.9)	-15 (-26.1)	-10 (-23.3)	0 (-17.8)		
BXSA005L8 Compressor: KANB-005E	BTU/H (Watts)	360 (110)	720 (210)	1310 (380)	1690 (500)	2130 (620)	2630 (770)		
	GPM (L/min)	1.0 (3.8)	1.1 (4.2)	1.3 (4.9)	1.4 (5.3)	1.5 (5.7)	1.6 (6.1)		
	PSIG (kPa)	0.6 (4.4)	0.7 (5.1)	1.0 (6.6)	1.1 (7.4)	1.2 (8.2)	1.3 (9.1)		
BXSA008L8 Compressor: KAMB-007E	BTU/H (Watts)	850 (250)	1330 (390)	2250 (660)	2840 (830)	3520 (1030)	4270 (1250)		
	GPM (L/min)	0.8 (3)	0.9 (3.4)	0.9 (3.4)	1.0 (3.9)	1.5 (5.7)	2.1 (7.8)		
	PSIG (kPa)	0.3 (2.2)	0.4 (2.8)	0.5 (3.4)	0.6 (4.4)	1.0 (7.2)	1.8 (12.6)		
BXSA010L8 Compressor: KAJB-010E	BTU/H (Watts)	1120 (330)	1800 (530)	2980 (870)	3750 (1100)	4630 (1360)	5630 (1650)		
	GPM (L/min)	1.0 (3.8)	1.1 (4.2)	1.3 (4.9)	1.4 (5.3)	1.5 (5.7)	2.3 (8.7)		
	PSIG (kPa)	0.8 (5.5)	0.9 (6.4)	1.1 (7.9)	1.3 (8.9)	1.4 (9.9)	2.9 (19.7)		
BXSA015L8 Compressor: KALB-015E	BTU/H (Watts)	1670 (490)	2710 (790)	4460 (1310)	5590 (1640)	6900 (2020)	8370 (2450)		
	GPM (L/min)	1.3 (4.9)	1.5 (5.7)	1.7 (6.4)	1.9 (7.1)	2.5 (9.4)	3.4 (12.7)		
	PSIG (kPa)	0.3 (2.2)	0.4 (2.8)	0.5 (3.3)	0.6 (3.9)	0.9 (6.3)	1.7 (11.4)		
BXSA020L8 Compressor: EADB-021E	BTU/H (Watts)	2460 (720)	4180 (1230)	6530 (1910)	7900 (2320)	9380 (2750)	10950 (3210)		
	GPM (L/min)	1.8 (6.8)	2.2 (8.3)	2.5 (9.5)	3.1 (11.8)	4.1 (15.7)	5.4 (20.5)		
	PSIG (kPa)	0.5 (3.7)	0.7 (4.9)	0.9 (6.1)	1.2 (8.6)	2.1 (14.4)	3.7 (25.3)		
BXSA021L8 Compressor: EAVB-021E	BTU/H (Watts)	2960 (870)	5100 (1490)	7740 (2270)	9200 (2700)	10740 (3150)	12320 (3610)		
	GPM (L/min)	1.9 (7.2)	2.0 (7.6)	2.1 (7.9)	2.9 (11)	4.4 (16.7)	4.6 (17.4)		
	PSIG (kPa)	0.8 (5.5)	0.8 (5.8)	0.9 (6.2)	1.4 (9.6)	2.7 (18.8)	2.9 (20.3)		
BXSA030L8 Compressor: LAHA-032E	BTU/H (Watts)	4110 (1200)	7790 (2280)	12250 (3590)	14820 (4340)	17640 (5170)	20720 (6070)		
	GPM (L/min)	2.7 (10.2)	3.0 (11.4)	5.0 (18.9)	7.0 (26.7)	9.8 (37.1)	13.5 (51.1)		
	PSIG (kPa)	1.2 (8.1)	1.4 (9.6)	2.6 (18.1)	4.8 (33.1)	8.8 (60.4)	16.7 (115.4)		
BXSA032L8 Compressor: LACA-032E	BTU/H (Watts)	6640 (1950)	10330 (3030)	15850 (4650)	-	-	-		
	GPM (L/min)	3.3 (12.5)	5.2 (19.7)	8.7 (33)	-	-	-		
	PSIG (kPa)	1.3 (8.9)	2.7 (18.6)	7.1 (48.8)	-	-	-		

For R449A, use R448A data.

MEDIUM TEMPERATURE

Capacity Rating Conditions: 85°F (29.4°C) Entering Water, 105°F (40.6°C) Condensing, 0°F (0°C) Subcooling

MODEL BXSA	SATURATED SUCTION TEMPERATURE °F (°C)									
	-5 (-20.6)	0 (-17.8)	5 (-15)	10 (-12.2)	15 (-9.4)	20 (-6.7)	25 (-3.9)			
BXSA010M8 Compressor: KARB-010E	BTU/H (Watts)	4870 (1430)	5540 (1620)	6320 (1850)	7170 (2100)	8070 (2370)	8980 (2630)	9870 (2890)		
	GPM (L/min)	1.2 (4.5)	1.3 (4.8)	1.4 (5.3)	1.6 (5.9)	1.8 (6.8)	2.1 (7.8)	2.3 (8.8)		
	PSIG (kPa)	1.1 (7.3)	1.2 (8)	1.3 (9.3)	1.6 (11.1)	2.0 (13.8)	2.5 (17.1)	3.0 (21)		
BXSA020M8 Compressor: KAKA-020E	BTU/H (Watts)	7920 (2320)	8930 (2620)	10200 (2990)	11600 (3400)	13100 (3840)	14800 (4340)	16400 (4810)		
	GPM (L/min)	1.3 (4.8)	1.5 (5.6)	1.8 (6.8)	2.2 (8.3)	2.7 (10.2)	3.3 (12.5)	3.9 (14.9)		
	PSIG (kPa)	0.5 (3.6)	0.6 (4.2)	0.7 (5.1)	0.9 (6.5)	1.3 (8.7)	1.7 (11.7)	2.3 (15.5)		
BXSA021M8 Compressor: ERCA-021E	BTU/H (Watts)	9610 (2820)	11200 (3280)	12800 (3750)	14600 (4280)	16400 (4810)	18500 (5420)	20800 (6100)		
	GPM (L/min)	1.6 (5.9)	1.9 (7)	2.3 (8.6)	2.8 (10.6)	3.5 (13.1)	4.3 (16.4)	5.4 (20.4)		
	PSIG (kPa)	0.6 (4.1)	0.8 (5.3)	1.0 (6.9)	1.4 (9.4)	1.9 (12.9)	2.6 (18)	3.7 (25.4)		
BXSA030M8 Compressor: ERFA-031E	BTU/H (Watts)	14300 (4190)	16400 (4810)	18600 (5450)	21100 (6180)	23800 (6980)	26700 (7820)	30000 (8790)		
	GPM (L/min)	3.1 (11.7)	3.1 (11.7)	3.3 (12.5)	3.8 (14.3)	4.6 (17.5)	5.8 (22.1)	7.6 (28.7)		
	PSIG (kPa)	0.9 (6.2)	0.9 (6.1)	1.0 (7)	1.3 (9.1)	1.9 (13.1)	2.9 (19.8)	4.5 (30.8)		

CAPACITY DATA - R404A R507

LOW TEMPERATURE

Capacity Rating Conditions: 85°F (29.4°C) Entering Water, 105°F (40.6°C) Condensing, 0°F (0°C) Subcooling

MODEL BXSA	SATURATED SUCTION TEMPERATURE °F (°C)								
	-40 (-40)	-30 (-34.4)	-20 (-28.9)	-15 (-26.1)	-10 (-23.3)	0 (-17.8)			
BXSA005L8 Compressor: KANB-005E	BTU/H (Watts)	730 (210)	1240 (360)	1910 (560)	2310 (680)	2750 (810)	3740 (1100)		
	GPM (L/min)	0.8 (3)	0.8 (3)	0.9 (3.4)	1.0 (3.8)	1.1 (4.2)	1.2 (4.6)		
	PSIG (kPa)	0.5 (3.1)	0.5 (3.1)	0.5 (3.7)	0.6 (4.4)	0.7 (5.1)	0.9 (5.9)		
BXSA008L8 Compressor: KAMB-007E	BTU/H (Watts)	1750 (510)	2360 (690)	3320 (970)	3910 (1150)	4550 (1330)	5940 (1740)		
	GPM (L/min)	0.5 (1.9)	0.6 (2.2)	0.8 (3)	0.9 (3.6)	1.2 (4.4)	1.7 (6.5)		
	PSIG (kPa)	0.2 (1.5)	0.3 (1.9)	0.4 (3.1)	0.6 (4)	0.8 (5.5)	1.5 (10.1)		
BXSA010L8 Compressor: KAJB-010E	BTU/H (Watts)	2210 (650)	3230 (950)	4480 (1310)	5210 (1530)	6010 (1760)	7860 (2300)		
	GPM (L/min)	1.0 (3.8)	1.1 (4.2)	1.2 (4.5)	1.3 (4.9)	1.4 (5.3)	2.1 (8)		
	PSIG (kPa)	0.8 (5.5)	0.9 (6.4)	1.1 (7.3)	1.2 (8.3)	1.3 (9.2)	2.6 (18.1)		
BXSA015L8 Compressor: KALB-015E	BTU/H (Watts)	3260 (960)	4830 (1420)	6700 (1960)	7780 (2280)	8950 (2620)	11660 (3420)		
	GPM (L/min)	1.4 (5.3)	1.5 (5.7)	1.6 (6.1)	1.7 (6.5)	2.1 (7.9)	3.3 (12.4)		
	PSIG (kPa)	0.4 (2.4)	0.4 (2.8)	0.5 (3.1)	0.5 (3.5)	0.7 (5.1)	1.6 (11)		
BXSA020L8 Compressor: EADB-021E	BTU/H (Watts)	3570 (1050)	5240 (1540)	7480 (2190)	8820 (2580)	10320 (3020)	13820 (4050)		
	GPM (L/min)	1.7 (6.4)	1.8 (6.8)	2.0 (7.6)	2.1 (7.9)	2.7 (10.3)	4.7 (17.6)		
	PSIG (kPa)	0.5 (3.5)	0.6 (3.9)	0.7 (4.7)	0.7 (5)	1.2 (8)	2.9 (20.3)		
BXSA021L8 Compressor: EAVB-021E	BTU/H (Watts)	4270 (1250)	6330 (1860)	8810 (2580)	10240 (3000)	11820 (3460)	15420 (4520)		
	GPM (L/min)	1.7 (6.4)	1.7 (6.3)	1.9 (7.1)	2.2 (8.5)	2.8 (10.7)	4.9 (18.5)		
	PSIG (kPa)	0.7 (4.8)	0.7 (4.7)	0.8 (5.4)	1.0 (6.7)	1.4 (9.3)	3.3 (22.5)		
BXSA030L8 Compressor: LAHA-032E	BTU/H (Watts)	5660 (1660)	9130 (2680)	13550 (3970)	16090 (4720)	18870 (5530)	25060 (7340)		
	GPM (L/min)	2.3 (8.7)	2.6 (9.8)	2.8 (10.7)	4.0 (15.3)	5.8 (22)	11.4 (43.2)		
	PSIG (kPa)	1.0 (7.1)	1.2 (8.4)	1.4 (9.5)	2.3 (16.1)	4.2 (28.6)	12.9 (88.9)		
BXSA032L8 Compressor: LACA-032E	BTU/H (Watts)	8130 (2380)	12230 (3580)	17220 (5050)	-	-	-	-	
	GPM (L/min)	1.8 (6.8)	2.5 (9.6)	5.2 (19.6)	-	-	-	-	
	PSIG (kPa)	0.7 (5)	1.2 (8.2)	3.5 (23.8)	-	-	-	-	

CAPACITY DATA - R407A
HIGH / MEDIUM TEMPERATURE

Capacity Rating Conditions: 85°F (29.4°C) Entering Water, 110°F (43.3°C) Condensing, 0°F (0°C) Subcooling

MODEL BXZA	SATURATED SUCTION TEMPERATURE °F (°C)										
	-10 (-23.3)	0 (-17.8)	10 (-12.2)	20 (-6.7)	25 (-3.9)	30 (-1.1)	35 (1.7)	40 (4.4)			
BXZA007H8 Compressor: ZB06KAE	BTU/H (Watts)	3200 (940)	4000 (1170)	5000 (1470)	6400 (1880)	7200 (2110)	8000 (2340)	8900 (2610)	9900 (2900)		
	GPM (L/min)	0.7 (2.6)	0.8 (3)	0.9 (3.4)	1.0 (3.6)	1.1 (4.1)	1.3 (4.8)	1.5 (5.7)	1.8 (6.7)		
	PSIG (kPa)	0.4 (3)	0.6 (3.8)	0.7 (4.6)	0.7 (5.1)	0.9 (6.4)	1.2 (8.1)	1.5 (10.4)	2.0 (13.6)		
BXZA008H8 Compressor: ZB07KAE	BTU/H (Watts)	3500 (1030)	4800 (1410)	6200 (1820)	7900 (2320)	8700 (2550)	9600 (2810)	10600 (3110)	11600 (3400)		
	GPM (L/min)	0.7 (2.6)	0.9 (3.4)	1.0 (3.8)	1.4 (5.2)	1.6 (6.1)	1.9 (7.1)	2.2 (8.2)	2.5 (9.5)		
	PSIG (kPa)	0.4 (3)	0.7 (4.6)	0.8 (5.6)	1.3 (9.1)	1.7 (11.6)	2.1 (14.7)	2.7 (18.7)	3.4 (23.7)		
BXZA009H8 Compressor: ZB08KAE	BTU/H (Watts)	4300 (1260)	5800 (1700)	7500 (2200)	9200 (2700)	10100 (2960)	11100 (3250)	12100 (3550)	13100 (3840)		
	GPM (L/min)	1.0 (3.8)	1.2 (4.4)	1.4 (5.3)	1.8 (6.7)	2.0 (7.6)	2.3 (8.7)	2.6 (9.9)	3.0 (11.2)		
	PSIG (kPa)	0.2 (1.2)	0.2 (1.6)	0.4 (2.4)	0.5 (3.8)	0.7 (4.7)	0.9 (5.9)	1.1 (7.4)	1.3 (9.2)		
BXZA010H8 Compressor: ZS09KAE	BTU/H (Watts)	5300 (1550)	6700 (1960)	8300 (2430)	10300 (3020)	11400 (3340)	12700 (3720)	14100 (4130)	15600 (4570)		
	GPM (L/min)	1.1 (4.1)	1.3 (4.8)	1.6 (6)	2.1 (7.8)	2.4 (9.1)	2.8 (10.7)	3.4 (12.8)	4.1 (15.3)		
	PSIG (kPa)	0.2 (1.4)	0.3 (2)	0.4 (3)	0.7 (4.9)	0.9 (6.4)	1.2 (8.6)	1.7 (11.6)	2.3 (15.9)		
BXZA011H8 Compressor: ZS11KAE	BTU/H (Watts)	6400 (1880)	8000 (2340)	10000 (2930)	12300 (3600)	13600 (3990)	15100 (4430)	16800 (4920)	18600 (5450)		
	GPM (L/min)	1.3 (4.9)	1.6 (6.2)	2.1 (8.1)	2.9 (11.1)	3.5 (13.1)	4.1 (15.7)	5.0 (18.8)	6.0 (22.8)		
	PSIG (kPa)	0.3 (2.1)	0.5 (3.2)	0.8 (5.3)	1.3 (9.1)	1.8 (12.1)	2.4 (16.5)	3.3 (22.8)	4.6 (31.9)		
BXZA015H8 Compressor: ZS13KAE	BTU/H (Watts)	7300 (2140)	9200 (2700)	11400 (3340)	14000 (4100)	15600 (4570)	17300 (5070)	19200 (5630)	21300 (6240)		
	GPM (L/min)	1.5 (5.7)	1.7 (6.4)	2.0 (7.6)	2.4 (9)	2.9 (11.1)	3.6 (13.8)	4.6 (17.3)	5.7 (21.7)		
	PSIG (kPa)	0.6 (4.2)	0.7 (4.8)	0.8 (5.8)	1.1 (7.3)	1.4 (9.8)	2.0 (13.7)	2.9 (20)	4.3 (29.8)		
BXZA020H8 Compressor: ZS15KAE	BTU/H (Watts)	8800 (2580)	11000 (3220)	13700 (4020)	16900 (4950)	18800 (5510)	20800 (6100)	23100 (6770)	25600 (7500)		
	GPM (L/min)	1.8 (7)	2.3 (8.5)	2.9 (11)	3.9 (14.7)	4.6 (17.3)	5.4 (20.5)	6.5 (24.5)	7.8 (29.5)		
	PSIG (kPa)	0.8 (5.2)	1.0 (6.9)	1.4 (9.8)	2.2 (15.2)	2.8 (19.5)	3.7 (25.6)	4.9 (34.1)	6.7 (46.3)		
BXZA025H8 Compressor: ZS19KAE	BTU/H (Watts)	9900 (2900)	12500 (3660)	15500 (4540)	19100 (5600)	21200 (6210)	23500 (6890)	26100 (7650)	28900 (8470)		
	GPM (L/min)	1.8 (6.8)	2.0 (7.6)	2.4 (9.1)	2.8 (10.6)	3.2 (12.1)	3.6 (13.6)	3.9 (14.7)	5.0 (19)		
	PSIG (kPa)	0.2 (1.3)	0.3 (2)	0.5 (3.4)	0.7 (5)	1.0 (6.6)	1.2 (8.3)	1.4 (9.5)	2.2 (15.3)		
BXZA030H8 Compressor: ZS21KAE	BTU/H (Watts)	13100 (3840)	16400 (4810)	20400 (5980)	25200 (7390)	27900 (8180)	31000 (9090)	34400 (10080)	38200 (11200)		
	GPM (L/min)	2.2 (8.3)	2.9 (11)	3.3 (12.5)	4.2 (15.7)	5.3 (20.2)	6.8 (25.8)	8.7 (33)	11.1 (42)		
	PSIG (kPa)	0.4 (2.7)	0.8 (5.4)	1.0 (7)	1.6 (10.9)	2.5 (16.9)	3.7 (25.8)	5.6 (39)	8.5 (58.6)		
BXZA035H8 Compressor: ZS26KAE	BTU/H (Watts)	13900 (4070)	17800 (5220)	22500 (6590)	28200 (8260)	31400 (9200)	34900 (10230)	38700 (11340)	42800 (12540)		
	GPM (L/min)	2.5 (9.5)	3.3 (12.5)	4.2 (15.9)	5.9 (22.4)	7.7 (29.2)	9.8 (37.3)	12.4 (46.9)	15.4 (58.4)		
	PSIG (kPa)	0.6 (4)	0.9 (5.9)	1.2 (8.5)	2.1 (14.8)	3.3 (22.8)	5.0 (34.7)	7.5 (52)	11.2 (76.9)		
BXZA040H8 Compressor: ZS29KAE	BTU/H (Watts)	16300 (4780)	20500 (6010)	25400 (7440)	31400 (9200)	34800 (10200)	38600 (11310)	42900 (12570)	47500 (13920)		
	GPM (L/min)	3.0 (11.4)	3.7 (14)	4.2 (16)	6.1 (23)	7.4 (27.9)	9.0 (34.1)	11.1 (41.9)	13.6 (51.7)		
	PSIG (kPa)	1.1 (7.5)	1.3 (8.8)	1.4 (9.9)	2.2 (15.1)	2.9 (20.1)	4.0 (27.8)	5.8 (39.7)	8.5 (58.3)		
BXZA045H8 Compressor: ZS33KAE	BTU/H (Watts)	18500 (5420)	23300 (6830)	28900 (8470)	35600 (10430)	39500 (11580)	43900 (12870)	48700 (14270)	54000 (15830)		
	GPM (L/min)	3.3 (12.5)	4.6 (17.4)	5.8 (21.9)	8.4 (31.9)	10.3 (38.9)	12.6 (47.5)	15.4 (58.3)	18.9 (71.7)		
	PSIG (kPa)	1.2 (8)	1.6 (10.8)	2.1 (14.1)	3.6 (24.9)	5.0 (34.8)	7.2 (50)	10.6 (73.3)	15.8 (109)		
BXZA050H8 Compressor: ZB38KCE	BTU/H (Watts)	19600 (5740)	25800 (7560)	33300 (9760)	42200 (12370)	47200 (13830)	52500 (15390)	58100 (17030)	64200 (18820)		
	GPM (L/min)	3.6 (13.6)	3.9 (14.8)	5.8 (21.9)	9.0 (33.9)	11.2 (42.2)	13.9 (52.5)	17.1 (64.9)	21.1 (79.7)		
	PSIG (kPa)	2.3 (15.9)	2.4 (16.5)	2.9 (20.2)	4.0 (27.6)	4.9 (33.6)	6.1 (42.1)	7.8 (53.8)	10.1 (69.9)		
BXZA060H8 Compressor: ZB45KCE	BTU/H (Watts)	22500 (6590)	29500 (8650)	38100 (11170)	48300 (14160)	54000 (15830)	60100 (17610)	66700 (19550)	73500 (21540)		
	GPM (L/min)	4.2 (15.9)	4.9 (18.5)	5.9 (22.4)	9.5 (35.8)	12.0 (45.3)	15.1 (57.2)	18.9 (71.7)	23.5 (89)		
	PSIG (kPa)	0.3 (1.7)	0.5 (3.2)	0.8 (5.5)	2.2 (15.1)	3.4 (23.4)	5.1 (35.5)	7.6 (52.7)	11.2 (77.1)		

NOTES:

- Above ratings are based on mean temperature.
- To convert to dew point ratings, use 0.95 multiplier.

Capacity Rating Conditions: 85°F (29.4°C) Entering Water, 105°F (40.6°C) Condensing, 0°F (0°C) Subcooling

MODEL BXZA	SATURATED SUCTION TEMPERATURE °F (°C)										
		-40 (-40)	-35 (-37.2)	-30 (-34.4)	-25 (-31.7)	-20 (-28.9)	-15 (-26.1)	-10 (-23.3)	-5 (-20.6)		
BXZA008L8 Compressor: ZF03KAE	BTU/H (Watts)	1800 (530)	2000 (590)	2300 (670)	2500 (730)	2900 (850)	3200 (940)	3600 (1060)	4100 (1200)		
	GPM (L/min)	1.0 (3.6)	1.0 (3.6)	1.0 (3.6)	1.0 (3.7)	1.0 (3.9)	1.1 (4.2)	1.2 (4.7)	1.4 (5.5)		
	PSIG (kPa)	0.6 (4.1)	0.6 (4.1)	0.6 (4.1)	0.6 (4.3)	0.7 (4.6)	0.8 (5.2)	0.9 (6.2)	1.1 (7.8)		
BXZA010L8 Compressor: ZF04KAE	BTU/H (Watts)	2200 (640)	2500 (730)	2900 (850)	3300 (970)	3800 (1110)	4400 (1290)	5000 (1470)	5800 (1700)		
	GPM (L/min)	1.0 (3.7)	1.0 (3.9)	1.1 (4.2)	1.3 (4.8)	1.5 (5.7)	1.8 (6.9)	2.3 (8.6)	2.9 (10.9)		
	PSIG (kPa)	0.6 (4.3)	0.7 (4.6)	0.8 (5.2)	0.9 (6.3)	1.2 (8.2)	1.6 (11.3)	2.3 (16.2)	3.5 (23.9)		
BXZA015L8 Compressor: ZF05KAE	BTU/H (Watts)	2600 (760)	3000 (880)	3400 (1000)	3900 (1140)	4600 (1350)	5200 (1520)	6000 (1760)	6800 (1990)		
	GPM (L/min)	0.7 (2.5)	0.7 (2.7)	0.8 (3)	0.9 (3.5)	1.1 (4.1)	1.3 (4.9)	1.6 (6)	1.9 (7.3)		
	PSIG (kPa)	0.4 (2.7)	0.5 (3.1)	0.5 (3.8)	0.7 (4.8)	0.9 (6.2)	1.2 (8.3)	1.6 (11.3)	2.2 (15.5)		
BXZA020L8 Compressor: ZF07KAE	BTU/H (Watts)	4300 (1260)	5000 (1470)	5700 (1670)	6500 (1900)	7400 (2170)	8300 (2430)	9400 (2750)	10600 (3110)		
	GPM (L/min)	1.6 (5.9)	1.8 (6.6)	2.0 (7.6)	2.3 (8.8)	2.7 (10.3)	3.2 (12.1)	3.8 (14.3)	4.5 (17.1)		
	PSIG (kPa)	0.4 (2.9)	0.5 (3.7)	0.7 (4.7)	0.9 (6)	1.1 (7.9)	1.5 (10.5)	2.1 (14.2)	2.8 (19.3)		
BXZA025L8 Compressor: ZF08K4E	BTU/H (Watts)	4900 (1440)	5600 (1640)	6500 (1900)	7500 (2200)	8500 (2490)	9700 (2840)	10900 (3190)	12200 (3580)		
	GPM (L/min)	1.5 (5.8)	1.5 (5.8)	1.6 (6.1)	1.8 (6.7)	2.0 (7.7)	2.5 (9.4)	3.1 (11.8)	4.0 (15)		
	PSIG (kPa)	0.6 (4.4)	0.6 (4.3)	0.7 (4.5)	0.7 (5)	0.9 (6)	1.1 (7.7)	1.6 (10.7)	2.3 (15.7)		
BXZA030L8 Compressor: ZF09K4E	BTU/H (Watts)	5500 (1610)	6300 (1850)	7200 (2110)	8400 (2460)	9600 (2810)	10900 (3190)	12200 (3580)	13600 (3990)		
	GPM (L/min)	1.5 (5.8)	1.6 (6.1)	1.8 (6.7)	2.1 (7.8)	2.5 (9.5)	3.1 (11.9)	3.9 (14.8)	4.8 (18.4)		
	PSIG (kPa)	0.6 (4.4)	0.7 (4.6)	0.7 (5)	0.9 (6)	1.1 (7.8)	1.6 (10.8)	2.2 (15.5)	3.2 (22.2)		
BXZA035L8 Compressor: ZF11K4E	BTU/H (Watts)	6800 (1990)	7800 (2290)	9000 (2640)	10400 (3050)	11900 (3490)	13600 (3990)	15300 (4480)	17000 (4980)		
	GPM (L/min)	2.4 (9)	2.7 (10.3)	3.2 (12)	3.8 (14.3)	4.5 (17.2)	5.4 (20.6)	6.4 (24.4)	7.5 (28.5)		
	PSIG (kPa)	1.1 (7.4)	1.3 (9)	1.6 (11.3)	2.1 (14.7)	2.8 (19.4)	3.7 (25.7)	4.9 (33.8)	6.3 (43.7)		
BXZA045L8 Compressor: ZF13K4E	BTU/H (Watts)	7800 (2290)	8800 (2580)	10100 (2960)	11600 (3400)	13400 (3930)	15300 (4480)	17500 (5130)	19700 (5770)		
	GPM (L/min)	3.0 (11.4)	3.4 (13.1)	4.0 (15.3)	4.8 (18.3)	5.8 (22.1)	7.1 (26.8)	8.6 (32.4)	10.3 (39)		
	PSIG (kPa)	1.5 (10.5)	1.8 (12.8)	2.4 (16.2)	3.1 (21.4)	4.2 (28.9)	5.7 (39.5)	7.9 (54.4)	10.8 (74.6)		
BXZA055L8 Compressor: ZF15K4E	BTU/H (Watts)	9900 (2900)	11100 (3250)	12600 (3690)	14500 (4250)	16500 (4840)	18900 (5540)	21500 (6300)	24200 (7090)		
	GPM (L/min)	2.6 (9.8)	2.8 (10.6)	3.0 (11.4)	3.4 (12.8)	4.5 (16.9)	5.9 (22.2)	7.6 (28.7)	9.7 (36.7)		
	PSIG (kPa)	0.6 (4.2)	0.7 (5)	0.8 (5.8)	1.1 (7.3)	1.8 (12.4)	2.9 (19.9)	4.5 (30.9)	6.8 (46.7)		
BXZA060L8 Compressor: ZF18K4E	BTU/H (Watts)	12000 (3520)	13500 (3960)	15300 (4480)	17500 (5130)	20100 (5890)	22800 (6680)	25900 (7590)	---	---	
	GPM (L/min)	2.8 (10.7)	3.5 (13.4)	4.6 (17.3)	6.0 (22.6)	7.8 (29.6)	10.1 (38.3)	12.9 (48.9)	---	---	
	PSIG (kPa)	0.7 (5)	1.2 (8.1)	1.9 (12.9)	3.0 (20.6)	4.7 (32.4)	7.3 (50.1)	11.0 (76.1)	---	---	

NOTES:

- Above ratings are based on mean temperature.
- To convert to dew point ratings, use 0.95 multiplier.

Capacity Rating Conditions: 85°F (29.4°C) Entering Water, 110°F (43.3°C) Condensing, 0°F (0°C) Subcooling

MODEL BXZA	SATURATED SUCTION TEMPERATURE °F (°C)										
		-10 (-23.3)	0 (-17.8)	10 (-12.2)	20 (-6.7)	25 (-3.9)	30 (-1.1)	35 (1.7)	40 (4.4)		
BXZA007H8 Compressor: ZB06KAE	BTU/H (Watts)	3200 (940)	4100 (1200)	5300 (1550)	6600 (1930)	7400 (2170)	8200 (2400)	9000 (2640)	9900 (2900)		
	GPM (L/min)	0.7 (2.6)	0.8 (3)	0.9 (3.4)	1.0 (3.8)	1.1 (4.3)	1.3 (5)	1.5 (5.8)	1.8 (6.9)		
	PSIG (kPa)	0.4 (3)	0.6 (3.8)	0.7 (4.6)	0.8 (5.4)	1.0 (6.8)	1.2 (8.5)	1.6 (10.9)	2.0 (14.1)		
BXZA008H8 Compressor: ZB07KAE	BTU/H (Watts)	3900 (1140)	5000 (1470)	6300 (1850)	7900 (2320)	8800 (2580)	9800 (2870)	10800 (3170)	11900 (3490)		
	GPM (L/min)	0.8 (3)	0.9 (3.4)	1.0 (3.9)	1.4 (5.3)	1.6 (6.2)	1.9 (7.3)	2.3 (8.7)	2.7 (10.4)		
	PSIG (kPa)	0.6 (3.8)	0.7 (4.6)	0.8 (5.8)	1.3 (9.3)	1.7 (12)	2.3 (15.6)	3.0 (20.6)	4.0 (27.3)		
BXZA009H8 Compressor: ZB08KAE	BTU/H (Watts)	4600 (1350)	5800 (1700)	7400 (2170)	9300 (2730)	10400 (3050)	11500 (3370)	12700 (3720)	14100 (4130)		
	GPM (L/min)	1.0 (3.9)	1.2 (4.4)	1.4 (5.3)	1.8 (6.8)	2.1 (7.9)	2.4 (9.2)	2.9 (10.8)	3.4 (12.7)		
	PSIG (kPa)	0.2 (1.2)	0.2 (1.6)	0.4 (2.4)	0.6 (3.9)	0.7 (5.1)	1.0 (6.6)	1.3 (8.7)	1.7 (11.5)		
BXZA010H8 Compressor: ZS09KAE	BTU/H (Watts)	5100 (1490)	6300 (1850)	7900 (2320)	9900 (2900)	11000 (3220)	12300 (3600)	13800 (4040)	15400 (4510)		
	GPM (L/min)	1.1 (4.1)	1.2 (4.7)	1.5 (5.8)	2.0 (7.6)	2.4 (8.9)	2.8 (10.6)	3.4 (12.7)	4.1 (15.5)		
	PSIG (kPa)	0.2 (1.4)	0.3 (1.9)	0.4 (2.9)	0.7 (4.7)	0.9 (6.2)	1.2 (8.4)	1.7 (11.5)	2.3 (16.1)		
BXZA011H8 Compressor: ZS11KAE	BTU/H (Watts)	6100 (1790)	7600 (2230)	9500 (2780)	11800 (3460)	13300 (3900)	14800 (4340)	16500 (4840)	18400 (5390)		
	GPM (L/min)	1.3 (4.8)	1.6 (5.9)	2.0 (7.7)	2.8 (10.6)	3.3 (12.6)	4.0 (15.2)	4.9 (18.5)	6.0 (22.6)		
	PSIG (kPa)	0.3 (1.9)	0.4 (3)	0.7 (4.8)	1.2 (8.4)	1.7 (11.4)	2.3 (15.7)	3.2 (22.1)	4.6 (31.5)		
BXZA015H8 Compressor: ZS13KAE	BTU/H (Watts)	7000 (2050)	8700 (2550)	10700 (3140)	13300 (3900)	14900 (4370)	16600 (4860)	18700 (5480)	21000 (6150)		
	GPM (L/min)	1.5 (5.7)	1.7 (6.4)	2.0 (7.6)	2.2 (8.3)	2.7 (10.3)	3.4 (13)	4.4 (16.6)	5.6 (21.3)		
	PSIG (kPa)	0.6 (4.2)	0.7 (4.8)	0.8 (5.8)	0.9 (6.5)	1.3 (8.8)	1.8 (12.4)	2.7 (18.6)	4.2 (28.9)		
BXZA020H8 Compressor: ZS15KAE	BTU/H (Watts)	8400 (2460)	10400 (3050)	13000 (3810)	16300 (4780)	18200 (5330)	20400 (5980)	22700 (6650)	25400 (7440)		
	GPM (L/min)	1.8 (6.8)	2.2 (8.2)	2.8 (10.5)	3.7 (14.1)	4.4 (16.7)	5.3 (20)	6.4 (24.2)	7.8 (29.4)		
	PSIG (kPa)	0.7 (5)	0.9 (6.5)	1.3 (9.3)	2.1 (14.4)	2.7 (18.6)	3.6 (24.6)	4.8 (33.3)	6.7 (46.1)		
BXZA025H8 Compressor: ZS19KAE	BTU/H (Watts)	9400 (2750)	11800 (3460)	14600 (4280)	18100 (5300)	20200 (5920)	22600 (6620)	25400 (7440)	28500 (8350)		
	GPM (L/min)	1.8 (6.8)	2.0 (7.6)	2.4 (9.1)	2.8 (10.6)	3.2 (12.1)	3.6 (13.6)	3.7 (13.9)	4.9 (18.7)		
	PSIG (kPa)	0.2 (1.3)	0.3 (2)	0.5 (3.4)	0.7 (5)	1.0 (6.6)	1.2 (8.3)	1.2 (8.6)	2.1 (14.8)		
BXZA030H8 Compressor: ZS21KAE	BTU/H (Watts)	12500 (3660)	16500 (4840)	21100 (6180)	26400 (7740)	29300 (8590)	32400 (9500)	35800 (10490)	39400 (11550)		
	GPM (L/min)	2.5 (9.5)	3.3 (12.5)	4.2 (15.9)	4.8 (18.2)	6.2 (23.4)	7.8 (29.7)	9.9 (37.4)	12.3 (46.6)		
	PSIG (kPa)	0.6 (3.8)	1.0 (7)	1.6 (11.1)	2.0 (14.1)	3.2 (21.7)	4.7 (32.6)	7.0 (48.2)	10.2 (70.2)		
BXZA035H8 Compressor: ZS26KAE	BTU/H (Watts)	13700 (4020)	17400 (5100)	22300 (6540)	28300 (8290)	31700 (9290)	35400 (10370)	39400 (11550)	43700 (12810)		
	GPM (L/min)	2.5 (9.5)	3.3 (12.5)	4.2 (15.9)	6.0 (22.6)	7.9 (30)	10.3 (38.8)	13.0 (49.3)	16.3 (61.7)		
	PSIG (kPa)	0.6 (4)	0.9 (5.9)	1.2 (8.5)	2.2 (15)	3.5 (23.9)	5.4 (37.2)	8.2 (56.8)	12.3 (85)		
BXZA040H8 Compressor: ZS29KAE	BTU/H (Watts)	15900 (4660)	21000 (6150)	26800 (7850)	33500 (9820)	37200 (10900)	41200 (12070)	45400 (13310)	50000 (14650)		
	GPM (L/min)	3.0 (11.4)	3.7 (14)	4.6 (17.4)	6.9 (26)	8.4 (31.8)	10.3 (38.9)	12.5 (47.5)	15.2 (57.7)		
	PSIG (kPa)	1.1 (7.5)	1.3 (8.8)	1.6 (10.7)	2.6 (18)	3.6 (24.7)	5.1 (34.8)	7.2 (49.8)	10.4 (71.8)		
BXZA045H8 Compressor: ZS33KAE	BTU/H (Watts)	17500 (5130)	23100 (6770)	29600 (8670)	36900 (10810)	41000 (12020)	45400 (13310)	50100 (14680)	55200 (16180)		
	GPM (L/min)	3.3 (12.5)	4.6 (17.4)	5.8 (22)	8.8 (33.3)	10.8 (40.8)	13.2 (49.9)	16.1 (60.8)	19.5 (73.7)		
	PSIG (kPa)	1.2 (8)	1.6 (10.8)	2.1 (14.2)	3.9 (26.6)	5.5 (37.9)	7.9 (54.7)	11.5 (79.4)	16.7 (115.3)		
BXZA050H8 Compressor: ZB38KCE	BTU/H (Watts)	19200 (5630)	25800 (7560)	33200 (9730)	41600 (12190)	46400 (13600)	51500 (15090)	57200 (16760)	63300 (18550)		
	GPM (L/min)	3.6 (13.6)	4.2 (15.9)	5.9 (22.3)	8.9 (33.6)	11.0 (41.5)	13.6 (51.4)	16.8 (63.5)	20.7 (78.5)		
	PSIG (kPa)	2.3 (15.9)	2.5 (17)	2.9 (20.3)	4.0 (27.4)	4.8 (33.1)	6.0 (41.1)	7.6 (52.4)	9.9 (68.5)		
BXZA060H8 Compressor: ZB45KCE	BTU/H (Watts)	22800 (6680)	30700 (9000)	39400 (11550)	49400 (14480)	55100 (16150)	61200 (17940)	67900 (19900)	75200 (22040)		
	GPM (L/min)	4.2 (15.9)	4.9 (18.5)	6.4 (24.2)	10.0 (38)	12.6 (47.8)	15.9 (60.1)	19.9 (75.4)	24.9 (94.3)		
	PSIG (kPa)	0.3 (1.7)	0.5 (3.2)	1.0 (6.7)	2.5 (16.9)	3.7 (25.8)	5.6 (38.7)	8.4 (57.6)	12.4 (85.4)		

NOTES:

- Above ratings are based on mean temperature.
- To convert to dew point ratings, use 0.95 multiplier.

For R449A, use R448A data.

LOW TEMPERATURE

Capacity Rating Conditions: 85°F (29.4°C) Entering Water, 105°F (40.6°C) Condensing, 0°F (0°C) Subcooling

MODEL BXZA		SATURATED SUCTION TEMPERATURE °F (°C)									
		-40 (-40)	-35 (-37.2)	-30 (-34.4)	-25 (-31.7)	-20 (-28.9)	-15 (-26.1)	-10 (-23.3)	-5 (-20.6)		
BXZA008L8 Compressor: ZF03KAE	BTU/H (Watts)	1900 (560)	2100 (620)	2400 (700)	2700 (790)	3000 (880)	3400 (1000)	3800 (1110)	4300 (1260)		
	GPM (L/min)	1.0 (3.6)	1.0 (3.6)	1.0 (3.7)	1.0 (3.8)	1.1 (4.1)	1.2 (4.5)	1.3 (5)	1.6 (5.9)		
	PSIG (kPa)	0.6 (4.1)	0.6 (4.1)	0.6 (4.2)	0.6 (4.4)	0.7 (4.9)	0.8 (5.6)	1.0 (6.8)	1.3 (8.7)		
BXZA010L8 Compressor: ZF04KAE	BTU/H (Watts)	2400 (700)	2700 (790)	3100 (910)	3500 (1030)	4100 (1200)	4600 (1350)	5300 (1550)	6000 (1760)		
	GPM (L/min)	1.0 (3.9)	1.1 (4.1)	1.2 (4.5)	1.4 (5.2)	1.6 (6.2)	2.0 (7.5)	2.5 (9.4)	3.1 (11.8)		
	PSIG (kPa)	0.7 (4.5)	0.7 (5)	0.8 (5.8)	1.0 (7.1)	1.4 (9.4)	1.9 (13)	2.7 (18.6)	4.0 (27.3)		
BXZA015L8 Compressor: ZF05KAE	BTU/H (Watts)	2800 (820)	3200 (940)	3700 (1080)	4200 (1230)	4800 (1410)	5500 (1610)	6300 (1850)	7100 (2080)		
	GPM (L/min)	0.7 (2.6)	0.8 (2.9)	0.9 (3.2)	1.0 (3.7)	1.2 (4.4)	1.4 (5.3)	1.7 (6.4)	2.1 (7.8)		
	PSIG (kPa)	0.4 (2.9)	0.5 (3.4)	0.6 (4.2)	0.8 (5.4)	1.0 (7)	1.3 (9.3)	1.8 (12.6)	2.5 (17.3)		
BXZA020L8 Compressor: ZF07KAE	BTU/H (Watts)	4500 (1320)	5100 (1490)	5900 (1730)	6600 (1930)	7500 (2200)	8500 (2490)	9600 (2810)	10800 (3170)		
	GPM (L/min)	1.6 (6.2)	1.8 (6.9)	2.1 (7.9)	2.4 (9)	2.8 (10.5)	3.3 (12.4)	3.9 (14.8)	4.7 (17.8)		
	PSIG (kPa)	0.5 (3.3)	0.6 (4)	0.7 (5)	0.9 (6.4)	1.2 (8.3)	1.6 (11)	2.2 (15)	3.0 (20.7)		
BXZA025L8 Compressor: ZF08K4E	BTU/H (Watts)	5200 (1520)	6000 (1760)	6900 (2020)	7900 (2320)	9000 (2640)	10100 (2960)	11400 (3340)	12800 (3750)		
	GPM (L/min)	1.5 (5.8)	1.5 (5.8)	1.6 (6.1)	1.8 (6.8)	2.1 (8)	2.6 (9.8)	3.3 (12.4)	4.2 (16)		
	PSIG (kPa)	0.6 (4.3)	0.6 (4.4)	0.7 (4.6)	0.7 (5.2)	0.9 (6.2)	1.2 (8.2)	1.7 (11.6)	2.6 (17.6)		
BXZA030L8 Compressor: ZF09K4E	BTU/H (Watts)	5900 (1730)	6800 (1990)	7700 (2260)	8800 (2580)	10000 (2930)	11200 (3280)	12700 (3720)	14200 (4160)		
	GPM (L/min)	1.6 (5.9)	1.7 (6.3)	1.9 (7.1)	2.2 (8.2)	2.6 (10)	3.3 (12.5)	4.2 (15.8)	5.4 (20.4)		
	PSIG (kPa)	0.6 (4.4)	0.7 (4.7)	0.8 (5.4)	0.9 (6.5)	1.2 (8.4)	1.7 (11.7)	2.5 (17.3)	3.9 (26.7)		
BXZA035L8 Compressor: ZF11K4E	BTU/H (Watts)	7300 (2140)	8400 (2460)	9600 (2810)	10900 (3190)	12400 (3630)	14000 (4100)	15800 (4630)	17700 (5190)		
	GPM (L/min)	2.5 (9.3)	2.8 (10.7)	3.3 (12.5)	3.9 (14.7)	4.6 (17.4)	5.5 (20.7)	6.6 (24.8)	7.9 (29.8)		
	PSIG (kPa)	1.1 (7.8)	1.4 (9.6)	1.7 (12)	2.2 (15.3)	2.9 (19.8)	3.8 (26)	5.1 (34.8)	6.8 (47.2)		
BXZA045L8 Compressor: ZF13K4E	BTU/H (Watts)	8400 (2460)	9600 (2810)	11000 (3220)	12600 (3690)	14400 (4220)	16400 (4810)	18500 (5420)	20900 (6130)		
	GPM (L/min)	4.2 (16)	4.7 (17.7)	5.3 (20.1)	6.1 (23.1)	7.1 (27)	8.4 (31.8)	9.9 (37.6)	11.8 (44.8)		
	PSIG (kPa)	2.5 (17.3)	3.0 (20.4)	3.6 (24.8)	4.5 (31.1)	5.8 (40)	7.6 (52.5)	10.2 (70.1)	13.8 (95)		
BXZA055L8 Compressor: ZF15K4E	BTU/H (Watts)	10600 (3110)	12100 (3550)	13800 (4040)	15700 (4600)	17800 (5220)	20200 (5920)	22800 (6680)	25700 (7530)		
	GPM (L/min)	2.6 (9.8)	3.1 (11.9)	3.8 (14.5)	4.8 (18)	5.9 (22.4)	7.4 (28.1)	9.3 (35.2)	11.6 (44)		
	PSIG (kPa)	0.6 (4.2)	0.9 (6.3)	1.4 (9.4)	2.0 (13.9)	2.9 (20.3)	4.3 (29.7)	6.3 (43.5)	9.2 (63.6)		
BXZA060L8 Compressor: ZF18K4E	BTU/H (Watts)	12900 (3780)	14700 (4310)	16800 (4920)	19100 (5600)	21600 (6330)	24400 (7150)	27500 (8060)	---		
	GPM (L/min)	4.8 (18)	5.6 (21.3)	6.7 (25.5)	8.2 (31)	10.1 (38.1)	12.4 (46.9)	15.3 (58.1)	---		
	PSIG (kPa)	2.0 (13.9)	2.7 (18.5)	3.7 (25.3)	5.1 (35.2)	7.2 (49.7)	10.3 (71)	14.8 (102.3)	---		

NOTES:

- Above ratings are based on mean temperature.
- To convert to dew point ratings, use 0.95 multiplier.

For R449A, use R448A data.

CAPACITY DATA - R407C
HIGH / MEDIUM TEMPERATURE

Capacity Rating Conditions: 85°F (29.4°C) Entering Water, 110°F (43.3°C) Condensing, 0°F (0°C) Subcooling

MODEL BXZA		SATURATED SUCTION TEMPERATURE °F (°C)							
		10 (-12.2)	15 (-9.4)	20 (-6.7)	25 (-3.9)	30 (-1.1)	35 (1.7)	40 (4.4)	
BXZA007H8 Compressor: ZB06KAE	BTU/H (Watts)	4790 (1400)	5410 (1590)	6080 (1780)	6800 (1990)	7580 (2220)	8420 (2470)	9340 (2740)	
	GPM (L/min)	0.8 (3)	0.9 (3.4)	0.9 (3.2)	1.0 (3.8)	1.2 (4.6)	1.5 (5.6)	1.8 (6.8)	
	PSIG (kPa)	0.6 (3.8)	0.7 (4.6)	0.6 (4.3)	0.8 (5.6)	1.1 (7.5)	1.5 (10.2)	2.0 (13.9)	
BXZA008H8 Compressor: ZB07KAE	BTU/H (Watts)	5760 (1690)	6490 (1900)	7280 (2130)	8140 (2390)	9050 (2650)	10000 (2930)	11100 (3250)	
	GPM (L/min)	0.9 (3.5)	1.1 (4.1)	1.3 (4.8)	1.5 (5.7)	1.8 (6.8)	2.2 (8.2)	2.7 (10.1)	
	PSIG (kPa)	0.7 (4.8)	0.9 (6.2)	1.2 (8)	1.5 (10.5)	2.0 (13.9)	2.7 (18.9)	3.8 (26.1)	
BXZA009H8 Compressor: ZB08KAE	BTU/H (Watts)	6770 (1980)	7580 (2220)	8480 (2490)	9450 (2770)	10520 (3080)	11700 (3430)	13000 (3810)	
	GPM (L/min)	1.2 (4.7)	1.4 (5.3)	1.6 (6.2)	1.9 (7.3)	2.3 (8.7)	2.7 (10.4)	3.3 (12.6)	
	PSIG (kPa)	0.3 (1.9)	0.4 (2.5)	0.5 (3.2)	0.6 (4.3)	0.9 (5.9)	1.2 (8.1)	1.6 (11.2)	
BXZA010H8 Compressor: ZS09KAE	BTU/H (Watts)	7940 (2330)	8950 (2620)	10010 (2930)	11120 (3260)	12310 (3610)	13600 (3990)	14900 (4370)	
	GPM (L/min)	1.6 (6)	1.9 (7.1)	2.2 (8.5)	2.7 (10.1)	3.2 (12)	3.8 (14.3)	4.5 (16.9)	
	PSIG (kPa)	0.4 (3.1)	0.6 (4.2)	0.8 (5.7)	1.1 (7.8)	1.5 (10.5)	2.0 (14.1)	2.7 (18.8)	
BXZA011H8 Compressor: ZS11KAE	BTU/H (Watts)	9480 (2780)	10680 (3130)	11950 (3500)	13280 (3890)	14690 (4310)	16200 (4750)	17800 (5220)	
	GPM (L/min)	2.3 (8.5)	2.7 (10.3)	3.3 (12.5)	4.0 (15.1)	4.8 (18.1)	5.7 (21.5)	6.7 (25.5)	
	PSIG (kPa)	0.8 (5.7)	1.2 (8)	1.6 (11.2)	2.2 (15.5)	3.1 (21.2)	4.2 (28.8)	5.6 (39)	
BXZA015H8 Compressor: ZS13KAE	BTU/H (Watts)	10830 (3170)	12200 (3580)	13640 (4000)	15170 (4450)	16780 (4920)	18500 (5420)	20300 (5950)	
	GPM (L/min)	1.8 (6.8)	2.0 (7.6)	2.5 (9.7)	3.2 (12.2)	4.0 (15.3)	5.0 (19)	6.2 (23.3)	
	PSIG (kPa)	0.7 (5.1)	0.9 (5.9)	1.2 (8)	1.6 (11.3)	2.4 (16.2)	3.4 (23.5)	4.9 (33.8)	
BXZA020H8 Compressor: ZS15KAE	BTU/H (Watts)	13050 (3820)	14710 (4310)	16450 (4820)	18280 (5360)	20230 (5930)	22300 (6540)	24500 (7180)	
	GPM (L/min)	3.2 (12.1)	3.8 (14.3)	4.5 (17.1)	5.4 (20.3)	6.3 (24)	7.5 (28.3)	8.8 (33.2)	
	PSIG (kPa)	1.6 (11.3)	2.1 (14.7)	2.8 (19.2)	3.6 (25.1)	4.8 (33)	6.3 (43.2)	8.2 (56.5)	
BXZA025H8 Compressor: ZS19KAE	BTU/H (Watts)	14720 (4310)	16590 (4860)	18560 (5440)	20630 (6050)	22820 (6690)	25200 (7390)	27600 (8090)	
	GPM (L/min)	2.2 (8.3)	2.4 (9.1)	2.6 (9.8)	3.0 (11.4)	3.2 (12.1)	4.1 (15.6)	5.2 (19.7)	
	PSIG (kPa)	0.4 (2.7)	0.5 (3.4)	0.6 (4.2)	0.8 (5.8)	1.0 (6.6)	1.6 (10.7)	2.4 (16.3)	
BXZA030H8 Compressor: ZS21KAE	BTU/H (Watts)	19770 (5790)	22290 (6530)	24920 (7300)	27710 (8120)	30650 (8980)	33800 (9910)	37100 (10870)	
	GPM (L/min)	3.0 (11.4)	3.6 (13.6)	4.7 (17.8)	6.1 (23.3)	7.9 (29.9)	10.0 (37.7)	12.4 (47)	
	PSIG (kPa)	0.8 (5.8)	1.2 (8.3)	2.0 (13.6)	3.1 (21.6)	4.8 (33)	7.1 (48.9)	10.3 (71)	
BXZA035H8 Compressor: ZS26KAE	BTU/H (Watts)	21940 (6430)	24720 (7240)	27650 (8100)	30740 (9010)	34010 (9970)	37500 (10990)	41200 (12070)	
	GPM (L/min)	3.2 (12.1)	4.6 (17.5)	6.5 (24.6)	8.6 (32.5)	10.9 (41.4)	13.5 (51.3)	16.5 (62.3)	
	PSIG (kPa)	0.8 (5.7)	1.4 (10)	2.5 (17.1)	4.0 (27.4)	6.0 (41.6)	8.8 (60.8)	12.6 (86.6)	
BXZA040H8 Compressor: ZS29KAE	BTU/H (Watts)	24590 (7210)	27710 (8120)	30990 (9080)	34450 (10100)	38120 (11170)	42000 (12310)	46100 (13510)	
	GPM (L/min)	3.9 (14.8)	4.9 (18.7)	6.2 (23.6)	7.8 (29.5)	9.7 (36.5)	11.8 (44.8)	14.4 (54.5)	
	PSIG (kPa)	1.3 (9.2)	1.7 (11.7)	2.3 (15.7)	3.2 (21.9)	4.5 (31.2)	6.5 (44.9)	9.3 (64.5)	
BXZA045H8 Compressor: ZS33KAE	BTU/H (Watts)	27250 (7990)	30720 (9000)	34350 (10070)	38190 (11190)	42250 (12380)	46600 (13660)	51100 (14980)	
	GPM (L/min)	5.2 (19.8)	6.7 (25.2)	8.4 (31.8)	10.5 (39.6)	12.9 (48.9)	15.8 (59.8)	19.1 (72.3)	
	PSIG (kPa)	1.8 (12.4)	2.5 (17.2)	3.6 (24.6)	5.2 (35.9)	7.6 (52.6)	11.1 (76.8)	16.1 (111)	
BXZA050H8 Compressor: ZB38KCE	BTU/H (Watts)	31430 (9210)	35230 (10320)	39340 (11530)	43810 (12840)	48680 (14270)	54000 (15830)	59700 (17500)	
	GPM (L/min)	5.4 (20.6)	6.9 (26.1)	8.8 (33.2)	11.1 (42.2)	14.1 (53.5)	17.8 (67.5)	22.4 (84.7)	
	PSIG (kPa)	2.8 (19.4)	3.3 (22.6)	3.9 (27.1)	4.9 (33.6)	6.2 (42.9)	8.2 (56.4)	11.0 (75.9)	
BXZA060H8 Compressor: ZB45KCE	BTU/H (Watts)	36990 (10840)	41830 (12260)	47110 (13810)	52830 (15480)	58960 (17280)	65500 (19200)	72500 (21250)	
	GPM (L/min)	5.7 (21.4)	7.5 (28.3)	10.0 (37.7)	13.2 (49.9)	17.3 (65.4)	22.4 (84.7)	28.6 (108.1)	
	PSIG (kPa)	0.7 (4.9)	1.4 (9.5)	2.4 (16.7)	4.0 (27.8)	6.5 (44.9)	10.2 (70.6)	15.8 (108.6)	

NOTE: The capacities shown above are rated at dew point. The dew point is a saturation point and is the condition (pressure and temperature) at which a gas begins to condense. Since R407C has significant glide, the saturated gas and saturated liquid temperatures are not the same. It is important that all components of a system are selected correctly

Capacity Rating Conditions: 85°F (29.4°C) Entering Water, 105°F (40.6°C) Condensing, 0°F (0°C) Subcooling

MODEL BXZA	SATURATED SUCTION TEMPERATURE °F (°C)									
	-10 (-23.3)	0 (-17.8)	10 (-12.2)	20 (-6.7)	25 (-3.9)	30 (-1.1)	35 (1.7)	40 (4.4)		
BXZA007H8 Compressor: ZB06KAE	BTU/H (Watts)	3400 (1000)	4300 (1260)	5400 (1580)	6800 (1990)	7500 (2200)	8400 (2460)	9300 (2730)	10200 (2990)	
	GPM (L/min)	0.7 (2.6)	0.8 (3)	0.9 (3.4)	1.0 (3.7)	1.1 (4.3)	1.3 (5)	1.6 (5.9)	1.9 (7)	
	PSIG (kPa)	0.4 (3)	0.6 (3.8)	0.7 (4.6)	0.8 (5.4)	1.0 (6.7)	1.2 (8.6)	1.6 (11.1)	2.1 (14.6)	
BXZA008H8 Compressor: ZB07KAE	BTU/H (Watts)	3900 (1140)	5100 (1490)	6500 (1900)	8200 (2400)	9200 (2700)	10200 (2990)	11400 (3340)	12700 (3720)	
	GPM (L/min)	0.8 (3)	0.9 (3.4)	1.0 (3.9)	1.4 (5.3)	1.7 (6.3)	2.0 (7.5)	2.4 (9.2)	3.0 (11.2)	
	PSIG (kPa)	0.6 (3.8)	0.7 (4.6)	0.8 (5.7)	1.3 (9.3)	1.8 (12.2)	2.4 (16.3)	3.2 (22.3)	4.5 (30.9)	
BXZA009H8 Compressor: ZB08KAE	BTU/H (Watts)	4700 (1380)	6100 (1790)	7600 (2230)	9400 (2750)	10500 (3080)	11700 (3430)	13000 (3810)	14600 (4280)	
	GPM (L/min)	1.0 (3.8)	1.1 (4.2)	1.3 (4.9)	1.6 (6.1)	1.8 (7)	2.2 (8.2)	2.6 (9.9)	3.2 (12.1)	
	PSIG (kPa)	0.2 (1.2)	0.2 (1.5)	0.3 (2)	0.5 (3.1)	0.6 (4.1)	0.8 (5.4)	1.1 (7.4)	1.5 (10.6)	
BXZA010H8 Compressor: ZS09KAE	BTU/H (Watts)	5300 (1550)	6900 (2020)	8700 (2550)	10700 (3140)	11800 (3460)	13000 (3810)	14300 (4190)	16100 (4720)	
	GPM (L/min)	1.0 (4)	1.2 (4.6)	1.5 (5.8)	2.0 (7.6)	2.3 (8.8)	2.7 (10.2)	3.2 (12)	3.9 (14.9)	
	PSIG (kPa)	0.2 (1.3)	0.3 (1.8)	0.4 (2.8)	0.7 (4.6)	0.9 (6)	1.1 (7.9)	1.5 (10.4)	2.2 (15.1)	
BXZA011H8 Compressor: ZS11KAE	BTU/H (Watts)	6700 (1960)	8400 (2460)	10500 (3080)	13000 (3810)	14400 (4220)	15900 (4660)	17600 (5160)	19500 (5710)	
	GPM (L/min)	1.2 (4.7)	1.6 (5.9)	2.1 (8)	2.9 (11.1)	3.5 (13.2)	4.2 (15.8)	5.0 (19)	6.0 (22.8)	
	PSIG (kPa)	0.3 (1.9)	0.4 (3)	0.7 (5.1)	1.3 (9.1)	1.8 (12.3)	2.4 (16.8)	3.4 (23.2)	4.6 (32)	
BXZA015H8 Compressor: ZS13KAE	BTU/H (Watts)	7600 (2230)	9600 (2810)	11900 (3490)	14800 (4340)	16400 (4810)	18200 (5330)	20100 (5890)	22200 (6510)	
	GPM (L/min)	1.4 (5.3)	1.5 (5.5)	1.8 (6.8)	2.6 (9.8)	3.2 (12)	3.9 (14.9)	4.9 (18.6)	6.1 (23.2)	
	PSIG (kPa)	0.6 (3.9)	0.6 (4.1)	0.7 (5.2)	1.2 (8.1)	1.6 (11.1)	2.3 (15.6)	3.3 (22.8)	4.9 (33.6)	
BXZA020H8 Compressor: ZS15KAE	BTU/H (Watts)	9200 (2700)	11500 (3370)	14400 (4220)	17700 (5190)	19800 (5800)	21900 (6420)	24200 (7090)	26700 (7820)	
	GPM (L/min)	1.8 (6.9)	1.9 (7.2)	2.3 (8.8)	3.2 (12.3)	4.0 (15.2)	5.0 (18.8)	6.2 (23.4)	7.7 (29.2)	
	PSIG (kPa)	0.7 (5.1)	0.8 (5.4)	1.0 (7.2)	1.7 (11.6)	2.3 (16)	3.2 (22.4)	4.6 (31.7)	6.6 (45.6)	
BXZA025H8 Compressor: ZS19KAE	BTU/H (Watts)	10300 (3020)	12900 (3780)	16200 (4750)	19900 (5830)	22100 (6480)	24500 (7180)	27100 (7940)	30000 (8790)	
	GPM (L/min)	2.0 (7.7)	2.2 (8.3)	2.5 (9.5)	2.8 (10.6)	3.0 (11.4)	3.2 (12.2)	4.1 (15.5)	5.3 (19.9)	
	PSIG (kPa)	0.3 (2.1)	0.4 (2.7)	0.6 (3.8)	0.7 (5)	0.8 (5.8)	1.0 (6.7)	1.5 (10.6)	2.4 (16.6)	
BXZA030H8 Compressor: ZS21KAE	BTU/H (Watts)	13800 (4040)	17300 (5070)	21600 (6330)	26600 (7800)	29400 (8620)	32900 (9640)	36400 (10670)	40200 (11780)	
	GPM (L/min)	2.8 (10.6)	3.5 (13.2)	3.1 (11.6)	4.9 (18.6)	6.2 (23.6)	8.3 (31.3)	10.6 (40.1)	13.5 (51)	
	PSIG (kPa)	0.7 (5)	1.1 (7.9)	0.9 (6)	2.1 (14.6)	3.2 (22.2)	5.2 (35.6)	7.9 (54.2)	11.9 (81.8)	
BXZA035H8 Compressor: ZS26KAE	BTU/H (Watts)	15400 (4510)	19300 (5660)	24200 (7090)	29700 (8700)	33100 (9700)	36700 (10760)	40500 (11870)	44800 (13130)	
	GPM (L/min)	2.6 (9.8)	3.0 (11.4)	4.2 (15.7)	6.8 (25.6)	8.4 (31.9)	10.3 (38.8)	12.2 (46.3)	14.6 (55.1)	
	PSIG (kPa)	0.6 (4.2)	0.7 (5.2)	1.2 (8.4)	2.7 (18.4)	3.9 (26.6)	5.4 (37.2)	7.4 (50.8)	10.1 (69.3)	
BXZA040H8 Compressor: ZS29KAE	BTU/H (Watts)	17500 (5130)	21900 (6420)	27500 (8060)	33800 (9910)	37300 (10930)	41700 (12220)	46100 (13510)	50900 (14920)	
	GPM (L/min)	3.4 (13)	4.5 (16.9)	6.1 (23)	8.3 (31.6)	9.8 (37)	11.8 (44.6)	14.0 (52.9)	16.6 (62.7)	
	PSIG (kPa)	1.2 (8.2)	1.5 (10.4)	2.2 (15.2)	3.5 (24.4)	4.6 (31.9)	6.4 (44.4)	8.8 (60.9)	12.2 (84.3)	
BXZA045H8 Compressor: ZS33KAE	BTU/H (Watts)	18600 (5450)	24200 (7090)	30300 (8880)	37200 (10900)	41400 (12130)	45900 (13450)	50800 (14890)	56100 (16440)	
	GPM (L/min)	3.9 (14.7)	5.4 (20.4)	7.5 (28.3)	10.3 (39.1)	12.3 (46.6)	14.6 (55.3)	17.4 (65.8)	20.6 (78.1)	
	PSIG (kPa)	1.3 (9.2)	1.9 (12.9)	3.0 (20.5)	5.1 (35.2)	7.0 (48.1)	9.6 (66.3)	13.4 (92.3)	18.7 (128.9)	
BXZA050H8 Compressor: ZB38KCE	BTU/H (Watts)	22300 (6540)	28100 (8240)	34900 (10230)	42900 (12570)	47300 (13860)	52100 (15270)	57200 (16760)	62600 (18350)	
	GPM (L/min)	4.0 (15.2)	5.1 (19.4)	6.9 (26)	9.6 (36.2)	11.4 (43)	13.5 (51.3)	16.1 (61.1)	19.2 (72.8)	
	PSIG (kPa)	2.4 (16.7)	2.7 (18.8)	3.3 (22.5)	4.2 (29.2)	5.0 (34.2)	5.9 (41)	7.3 (50)	9.0 (62.1)	
BXZA060H8 Compressor: ZB45KCE	BTU/H (Watts)	26500 (7770)	33400 (9790)	41500 (12160)	50900 (14920)	56200 (16470)	61800 (18110)	67900 (19900)	74400 (21800)	
	GPM (L/min)	5.1 (19.4)	6.5 (24.5)	8.5 (32.2)	11.6 (43.8)	13.6 (51.4)	16.0 (60.4)	18.8 (71.2)	22.2 (83.9)	
	PSIG (kPa)	0.5 (3.7)	1.0 (6.8)	1.8 (12.3)	3.2 (22)	4.2 (29.3)	5.7 (39)	7.5 (52)	10.1 (69.4)	

LOW TEMPERATURE

Capacity Rating Conditions: 85°F (29.4°C) Entering Water, 105°F (40.6°C) Condensing, 0°F (0°C) Subcooling

MODEL BXZA	SATURATED SUCTION TEMPERATURE °F (°C)														
		-40 (-40)	-30 (-34.4)	-25 (-31.7)	-20 (-28.9)	-15 (-26.1)	-10 (-23.3)	-5 (-20.6)	0 (-17.8)						
BXZA008L8 Compressor: ZF03KAE	BTU/H (Watts)	2000 (590)	2400 (700)	2700 (790)	3100 (910)	3500 (1030)	3900 (1140)	4400 (1290)	5000 (1470)						
	GPM (L/min)	0.6 (2.2)	0.7 (2.5)	0.7 (2.8)	0.8 (3)	0.9 (3.4)	1.0 (3.8)	1.2 (4.4)	1.3 (5.1)						
	PSIG (kPa)	0.3 (1.9)	0.3 (2.4)	0.4 (2.7)	0.5 (3.1)	0.5 (3.7)	0.7 (4.5)	0.8 (5.5)	1.0 (6.9)						
BXZA010L8 Compressor: ZF04KAE	BTU/H (Watts)	2500 (730)	3200 (940)	3600 (1060)	4100 (1200)	4700 (1380)	5400 (1580)	6100 (1790)	6900 (2020)						
	GPM (L/min)	0.8 (2.9)	0.9 (3.6)	1.1 (4.1)	1.2 (4.7)	1.4 (5.4)	1.7 (6.4)	2.0 (7.5)	2.3 (8.8)						
	PSIG (kPa)	0.4 (2.9)	0.6 (4)	0.7 (4.9)	0.9 (6.1)	1.1 (7.7)	1.4 (9.8)	1.9 (12.8)	2.4 (16.7)						
BXZA015L8 Compressor: ZF05KAE	BTU/H (Watts)	3000 (880)	3900 (1140)	4500 (1320)	5100 (1490)	5800 (1700)	6500 (1900)	7400 (2170)	8200 (2400)						
	GPM (L/min)	0.8 (2.9)	0.9 (3.3)	0.9 (3.4)	1.0 (3.6)	1.1 (4.2)	1.3 (4.9)	1.5 (5.8)	1.8 (6.9)						
	PSIG (kPa)	0.5 (3.5)	0.6 (4.4)	0.8 (5.5)	0.7 (5.1)	0.9 (6.4)	1.2 (8.3)	1.6 (10.8)	2.1 (14.3)						
BXZA020L8 Compressor: ZF07KAE	BTU/H (Watts)	4600 (1350)	6200 (1820)	7100 (2080)	8100 (2370)	9100 (2670)	10200 (2990)	11500 (3370)	12900 (3780)						
	GPM (L/min)	1.1 (4.3)	1.4 (5.4)	1.6 (6.2)	1.9 (7.2)	2.2 (8.5)	2.7 (10.1)	3.2 (12.2)	3.9 (14.8)						
	PSIG (kPa)	0.2 (1.6)	0.4 (2.5)	0.5 (3.2)	0.6 (4.3)	0.8 (5.7)	1.1 (7.8)	1.5 (10.7)	2.2 (14.9)						
BXZA025L8 Compressor: ZF08K4E	BTU/H (Watts)	5700 (1670)	7400 (2170)	8300 (2430)	9300 (2730)	10500 (3080)	11700 (3430)	13100 (3840)	14500 (4250)						
	GPM (L/min)	1.4 (5.3)	1.4 (5.4)	1.6 (6.1)	1.7 (6.2)	1.9 (7.1)	2.2 (8.4)	2.7 (10.2)	3.3 (12.5)						
	PSIG (kPa)	0.6 (4)	0.6 (4)	0.7 (4.5)	0.7 (4.7)	0.8 (5.4)	1.0 (6.6)	1.2 (8.6)	1.7 (11.8)						
BXZA030L8 Compressor: ZF09K4E	BTU/H (Watts)	6300 (1850)	8200 (2400)	9300 (2730)	10400 (3050)	11600 (3400)	13000 (3810)	14500 (4250)	16100 (4720)						
	GPM (L/min)	1.5 (5.7)	1.6 (6.1)	1.7 (6.4)	1.8 (6.9)	2.1 (8.1)	2.6 (9.8)	3.2 (12)	4.0 (15)						
	PSIG (kPa)	0.6 (4.2)	0.7 (4.5)	0.7 (4.8)	0.8 (5.3)	0.9 (6.4)	1.2 (8.2)	1.6 (11.1)	2.3 (15.7)						
BXZA035L8 Compressor: ZF11K4E	BTU/H (Watts)	7900 (2320)	10200 (2990)	11500 (3370)	12900 (3780)	14500 (4250)	16200 (4750)	18100 (5300)	20100 (5890)						
	GPM (L/min)	1.8 (6.8)	2.0 (7.5)	2.2 (8.3)	2.5 (9.5)	3.0 (11.3)	3.6 (13.8)	4.5 (17.1)	5.7 (21.5)						
	PSIG (kPa)	0.7 (5)	0.8 (5.7)	1.0 (6.6)	1.2 (8)	1.5 (10.3)	2.0 (13.8)	2.8 (19.3)	4.0 (27.6)						
BXZA045L8 Compressor: ZF13K4E	BTU/H (Watts)	8800 (2580)	11500 (3370)	13000 (3810)	14700 (4310)	16600 (4860)	18600 (5450)	20800 (6100)	23100 (6770)						
	GPM (L/min)	1.9 (7.3)	2.4 (9.1)	2.8 (10.7)	3.4 (12.9)	4.2 (15.9)	5.3 (20)	6.7 (25.2)	8.4 (31.8)						
	PSIG (kPa)	0.8 (5.5)	1.1 (7.5)	1.4 (9.5)	1.8 (12.5)	2.5 (17.3)	3.6 (24.5)	5.2 (35.7)	7.7 (52.7)						
BXZA055L8 Compressor: ZF15K4E	BTU/H (Watts)	11100 (3250)	14400 (4220)	16200 (4750)	18200 (5330)	20400 (5980)	22900 (6710)	25500 (7470)	28400 (8320)						
	GPM (L/min)	2.2 (8.3)	2.7 (10.2)	2.9 (11)	3.2 (12.1)	3.7 (14)	4.8 (18)	6.2 (23.4)	8.0 (30.4)						
	PSIG (kPa)	0.4 (2.7)	0.7 (4.6)	0.8 (5.4)	1.0 (6.6)	1.3 (8.7)	2.0 (13.9)	3.2 (21.8)	4.9 (33.9)						
BXZA060L8 Compressor: ZF18K4E	BTU/H (Watts)	13400 (3930)	17400 (5100)	19700 (5770)	22100 (6480)	24700 (7240)	27500 (8060)	30600 (8970)	34000 (9960)						
	GPM (L/min)	2.8 (10.6)	3.3 (12.5)	4.0 (15)	5.1 (19.3)	6.6 (24.9)	8.5 (32.2)	11.0 (41.6)	14.1 (53.5)						
	PSIG (kPa)	0.7 (5)	1.0 (7)	1.4 (10)	2.3 (15.6)	3.5 (24.3)	5.4 (37.5)	8.4 (57.8)	12.9 (89)						

MODEL BXHA	COMPRESSOR MODEL NO.	POWER SUPPLY	COMPRESSOR		UNIT		
			RLA	LRA	MCA	MOP	
BXHA015H7-	IS2	CR18K6E-PFV	208-230/1/60	9.4	49.0	11.8	20
	IT3	CR18K6E-TF5	208-230/3/60	5.4	49.0	6.8	15
BXHA020H7-	IS2	CR24K6E-PFV	208-230/1/60	11.2	61.0	14.0	25
	IT3	CR24K6E-TF5	208-230/3/60	6.9	55.0	8.6	15
	IT4	CR24K6E-TFD	460/3/60	3.6	28.0	4.5	15
BXHA025H7-	IS2	CR32K6E-PFV	208-230/1/60	14.4	82.0	18.0	30
	IT3	CR32K6E-TF5	208-230/3/60	9.0	72.0	11.3	20
	IT4	CR32K6E-TFD	460/3/60	4.6	33.0	5.7	15
BXHA030H7-	IS2	CR38K6E-PFV	208-230/1/60	17.1	105.0	21.4	35
	IT3	CR38K6E-TF5	208-230/3/60	10.7	85.0	13.4	20
	IT4	CR38K6E-TFD	460/3/60	5.3	42.0	6.6	15
BXHA035H7-	IS2	CR42K6E-PFV	208-230/1/60	18.3	102.0	22.9	40
	IT3	CR42K6E-TF5	208-230/3/60	12.6	91.0	15.8	25
	IT4	CR42K6E-TFD	460/3/60	5.7	42.0	7.1	15
	IT5	CR42K6E-TFE	575/3/60	4.7	39.0	5.9	15
BXHA040H7-	IS2	CR53KQE-PFV	208-230/1/60	26.0	140.0	32.5	50
	IT3	CR53KQE-TF5	208-230/3/60	16.3	107.0	20.4	35
	IT4	CR53KQE-TFD	460/3/60	8.1	55.0	10.1	15
BXHA050H7-	IS2	CRNQ-050E-PFV	208-230/1/60	30.8	142.0	38.5	60
	IT3	CRNQ-050E-TF5	208-230/3/60	19.2	130.0	24.0	40
	IT4	CRNQ-050E-TFD	460/3/60	8.7	65.0	10.8	20
	IT5	CRNQ-050E-TFE	575/3/60	7.1	52.0	8.8	15
BXHA006M8-	IS2	RST45C1E-CAA	115/1/60	9.4	54.5	11.8	20
	IT3	RST45C1E-CAV	208-230/1/60	4.6	26.5	5.8	15
BXHA008M8-	IS2	RST55C1E-CAA	115/1/60	13.5	70.0	16.9	30
	IT3	RST55C1E-CAV	208-230/1/60	6.1	33.7	7.6	15
BXHA009M8-	IS2	RST64C1E-CAA	115/1/60	13.1	77.0	16.4	25
	IT3	RST64C1E-CAV	208-230/1/60	8.1	43.0	10.1	15
BXHA010M8-	IS2	RST70C1E-PFV	208-230/1/60	6.9	46.0	8.6	15
	IT3	RST70C1E-TA5	208-230/3/60	4.9	36.0	6.1	15
BXHA011M8-	IS2	RST80C1E-PFV	208-230/1/60	8.3	46.0	10.4	15
	IT3	RST80C1E-TA5	208-230/3/60	5.1	36.0	6.4	15
BXHA013M8-	IS2	RST97C1E-PFV	208-230/1/60	9.0	51.0	11.3	20
	IT3	RST97C1E-TA5	208-230/3/60	5.4	36.0	6.8	15
BXHA015M6-	IS2	CS10K6E-PFV	208-230/1/60	9.8	56.0	12.3	20
	IT3	CS10K6E-TF5	208-230/3/60	6.7	51.0	8.4	15
	IT4	CS10K6E-TFD	460/3/60	3.2	25.0	4.0	15
BXHA020M6-	IS2	CS12K6E-PFV	208-230/1/60	9.8	56.0	12.3	20
	IT3	CS12K6E-TF5	208-230/3/60	6.7	51.0	8.4	15
BXHA025M6-	IS2	CS14K6E-PFV	208-230/1/60	11.2	61.0	14.0	25
	IT3	CS14K6E-TF5	208-230/3/60	8.2	55.0	10.3	15
	IT4	CS14K6E-TFD	460/3/60	4.2	28.0	5.3	15
BXHA030M6-	IS2	CS18K6E-PFV	208-230/1/60	14.4	82.0	17.9	30
	IT3	CS18K6E-TF5	208-230/3/60	9.4	65.5	11.8	15
	IT4	CS18K6E-TFD	460/3/60	4.2	33.0	5.3	15
BXHA035M6-	IS2	CS20K6E-PFV	208-230/1/60	16.7	96.0	20.8	35
	IT3	CS20K6E-TF5	208-230/3/60	13.3	75.0	16.6	20
	IT4	CS20K6E-TFD	460/3/60	4.6	40.0	5.7	15
BXHA040M6-	IS2	CS27K6E-PFV	208-230/1/60	21.5	121.0	26.8	45
	IT3	CS27K6E-TF5	208-230/3/60	13.7	105.0	17.1	30
	IT4	CS27K6E-TFD	460/3/60	7.6	52.0	9.5	15
BXHA050M6-	IS2	CS33K6E-PFV	208-230/1/60	27.6	125.0	34.5	60
	IT3	CS33K6E-TF5	208-230/3/60	16.8	102.0	21.0	35
	IT4	CS33K6E-TFD	460/3/60	8.8	48.0	11.1	15
BXHA006L6-	IS1	RFT22C1E-CAA	115/1/60	7.1	54.5	8.9	15
	IS2	RFT22C1E-CAV	208-230/1/60	4.7	29.0	5.9	15
BXHA008L6-	IS1	RFT26C1E-CAA	115/1/60	9.7	66.0	12.1	20
	IS2	RFT26C1E-CAV	208-230/1/60	5.8	35.5	7.3	15
BXHA010L6-	IS2	CF04K6E-PFV	208-230/1/60	9.9	59.2	12.4	20
	IT3	CF04K6E-TF5	208-230/3/60	5.7	52.0	7.1	15
BXHA020L6-	IS2	CF06K6E-PFV	208-230/1/60	10.3	59.2	12.8	20
	IT3	CF06K6E-TF5	208-230/3/60	6.3	52.0	7.9	15
BXHA025L6-	IS2	CF09K6E-PFV	208-230/1/60	15.0	87.0	18.8	30
	IT3	CF09K6E-TF5	208-230/3/60	9.2	72.2	11.5	20
	IT4	CF09K6E-TFD	460/3/60	4.9	35.8	6.2	15
BXHA030L6-	IS2	CF12K6E-PFV	208-230/1/60	18.4	105.0	23.0	40
	IT3	CF12K6E-TF5	208-230/3/60	11.0	85.0	13.8	20
	IT4	CF12K6E-TFD	460/3/60	5.9	42.0	7.4	15

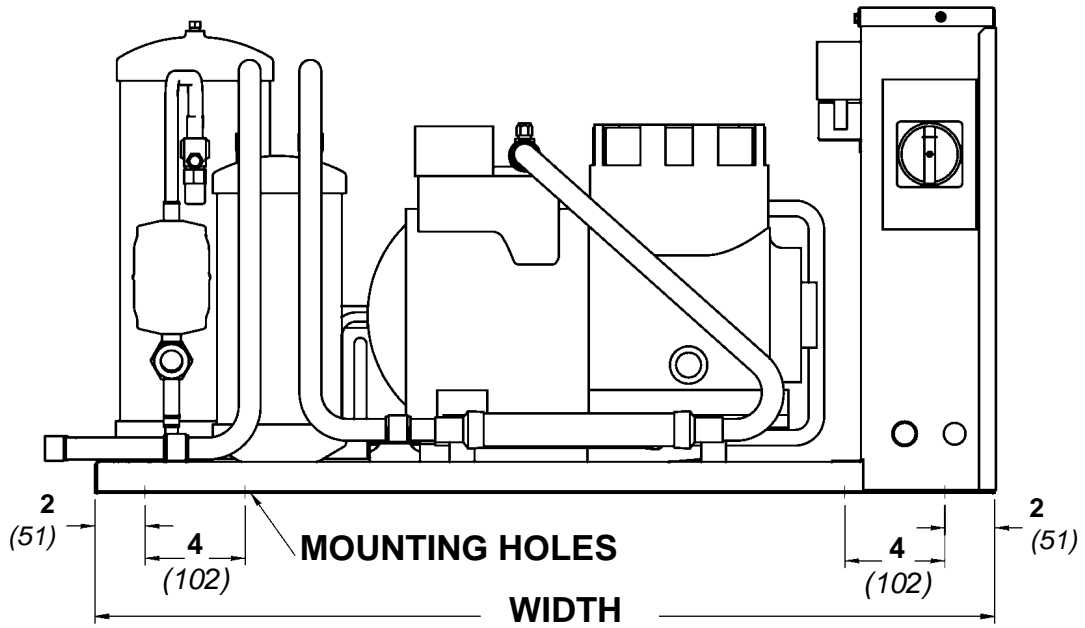
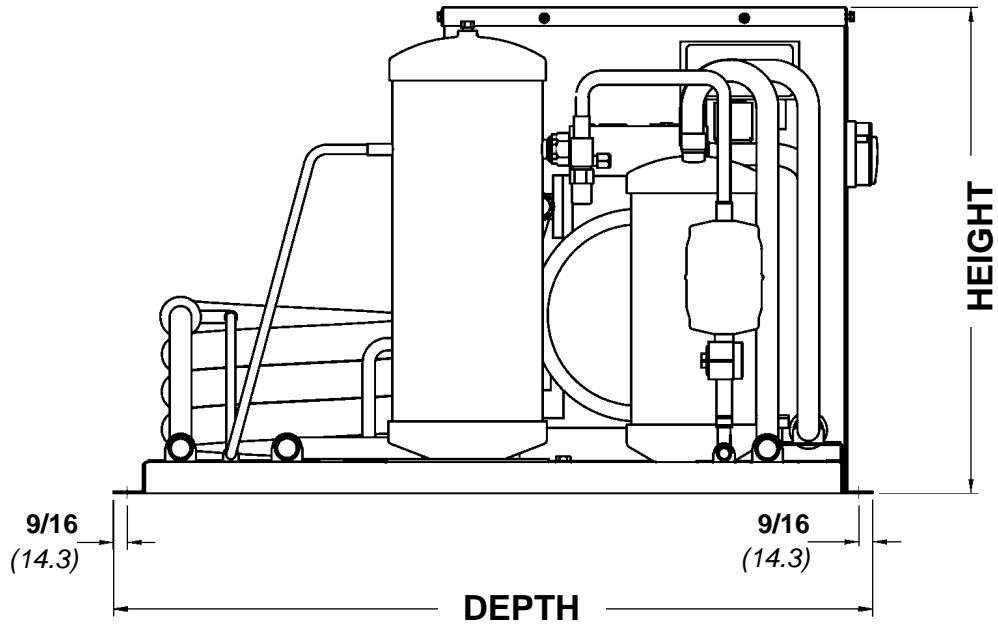
Above listed RLA value is based on UL rating method and may differ from published compressor RLA data.

MODEL BXSA	COMPRESSOR MODEL NO.	POWER SUPPLY	COMPRESSOR		UNIT		
			RLA	LRA	MCA	MOP	
BXSA010M8-	IS2	KARB-010E-CAV	208-230/1/60	7.4	40	9.3	15
	IT3	KARA-010E-TAC	208-230/3/60	4.3	27	5.4	15
BXSA020M8-	IS2	KAKB-021E-CAV	208-230/1/60	10.6	55	13.3	20
	IT3	KAKA-020E-TAC	208-230/3/60	6.8	50	8.5	15
BXSA021M8-	IS2	KAKB-022E-TAD	460/3/60	3.0	25	3.8	15
	IT3	ERCA-021E-TAC	208-230/3/60	8.8	46	11.0	15
	IT4	ERCA-020E-TAD	460/3/60	3.5	23	4.4	15
BXSA030M8-	IS3	ERCA-020E-TAE	575/3/60	3.1	20	3.9	15
	IT3	ERFB-031E-CAB	230/1/60	17.0	86	21.3	35
	IT4	ERFA-031E-TAC	208-230/3/60	12.4	82	15.5	25
BXSA005L6-	IS2	KANB-005E-CAV	208-230/1/60	3.6	24	4.5	15
	IT3	KANA-006E-TAC	208-230/3/60	2.2	13.2	2.8	15
BXSA008L6-	IS2	KAMB-007E-CAV	208-230/1/60	5.6	36	7.0	15
	IT3	KAMA-007E-TAC	208-230/3/60	3.2	19.9	4.0	15
BXSA010L6-	IS2	KAJB-010E-CAV	208-230/1/60	6.9	40	8.6	15
	IT3	KAJA-011E-TAC	208-230/3/60	4.6	27	5.8	15
BXSA015L6-	IS2	KALB-015E-CAV	208-230/1/60	9.9	55	12.4	20
	IT3	KALA-016E-TAC	208-230/3/60	6.6	50	8.3	15
	IT4	KALA-016E-TAD	460/3/60	3.4	25	4.3	15
BXSA020L6-	IS3	EADB-021E-CAB	230/1/60	10.0	58	12.5	20
	IT3	EADA-020E-TAC	208-230/3/60	6.8	46	8.5	15
BXSA021L6-	IS2	EAVB-021E-CAV	208-230/1/60	14.7	102	18.4	30
	IT3	EAVA-021E-TAC	208-230/3/60	7.4	50	9.3	15
	IT4	EAVA-021E-TAD	460/3/60	3.9	26.6	4.9	15
	IT5	EAVA-021E-TAE	575/3/60	3.1	20	3.9	15
BXSA030L6-	IS3	LAHB-032E-CAB	230/1/60	16.7	105	20.9	35
	IT3	LAHA-032E-TAC	208-230/3/60	12.8	112	16.0	25
	IT4	LAHA-032E-TAD	460/3/60	6.0	56	7.5	15
	IT5	LAHA-032E-TAE	575/3/60	4.1	30	5.1	15
BXSA032L6-	IS3	LACB-032E-CAB	230/1/60	15.5	105	19.4	30
	IT3	LACA-032E-TAC	208-230/3/60	12.8	112	16.0	25
	IT4	LACA-032E-TAD	460/3/60	6.0	56	7.5	15

Above listed RLA value is based on UL rating method and may differ from published compressor RLA data.

MODEL BXZA	COMPRESSOR MODEL NO.	POWER SUPPLY	COMPRESSOR		UNIT		
			RLA	LRA	MCA	MOP	
BXZA007H8-	IS2	ZB06KAE-PFV	208-230/1/60	6.0	36.0	7.5	15
	IT3	ZB06KAE-TF5	208-230/3/60	4.8	37.8	6.0	15
BXZA008H8-	IS2	ZB07KAE-PFV	208-230/1/60	6.3	48.0	7.9	15
	IT3	ZB07KAE-TF5	208-230/3/60	5.2	37.8	6.5	15
BXZA009H8-	IS2	ZB08KAE-PFV	208-230/1/60	8.0	47.2	10.0	15
	IT3	ZB08KAE-TF5	208-230/3/60	5.3	37.8	6.6	15
BXZA010H8-	IS2	ZS09KAE-PFV	208-230/1/60	10.0	40.3	12.5	20
	IT3	ZS09KAE-TF5	208-230/3/60	8.0	55.4	10.0	15
	IT4	ZS09KAE-TFD	460/3/60	3.8	28	4.8	15
BXZA011H8-	IS2	ZS11KAE-PFV	208-230/1/60	12.6	55	15.8	25
	IT3	ZS11KAE-TF5	208-230/3/60	10.4	58	13.0	20
	IT4	ZS11KAE-TFD	460/3/60	4.3	28	5.4	15
BXZA015H8-	IS2	ZS13KAE-PFV	208-230/1/60	12.0	56	15.0	25
	IT3	ZS13KAE-TF5	208-230/3/60	9.7	58	12.1	20
	IT4	ZS13KAE-TFD	460/3/60	4.8	29	6.0	15
	IT5	ZS13KAE-TFE	575/3/60	3.6	24.5	4.5	15
BXZA020H8-	IS2	ZS15KAE-PFV	208-230/1/60	15.7	68	19.6	35
	IT3	ZS15KAE-TF5	208-230/3/60	10.6	58	13.3	20
	IT4	ZS15KAE-TFD	460/3/60	5.4	29	6.8	15
	IT5	ZS15KAE-TFE	575/3/60	3.9	24	4.9	15
BXZA025H8-	IS2	ZS19KAE-PFV	208-230/1/60	18.0	75	22.5	40
	IT3	ZS19KAE-TF5	208-230/3/60	13.7	73	17.1	30
	IT4	ZS19KAE-TFD	460/3/60	6.5	38	8.1	15
	IT5	ZS19KAE-TFE	575/3/60	4.3	28	5.4	15
BXZA030H8-	IS2	ZS21KAE-PFV	208-230/1/60	23.2	112	29.0	45
	IT3	ZS21KAE-TF5	208-230/3/60	15.2	93	19.0	30
	IT4	ZS21KAE-TFD	460/3/60	6.9	48	8.6	15
	IT5	ZS21KAE-TFE	575/3/60	5.8	33	7.3	15
BXZA035H8-	IS2	ZS26KAE-PFV	208-230/1/60	23.6	104	29.5	50
	IT3	ZS26KAE-TF5	208-230/3/60	15.5	93	19.4	30
	IT4	ZS26KAE-TFD	460/3/60	6.9	48	8.6	15
	IT5	ZS26KAE-TFE	575/3/60	6.4	38	8.0	15
BXZA040H8-	IS2	ZS29KAE-PFV	208-230/1/60	26.1	137	32.6	50
	IT3	ZS29KAE-TF5	208-230/3/60	20.5	114	25.6	45
	IT4	ZS29KAE-TFD	460/3/60	9.4	58	11.8	20
	IT5	ZS29KAE-TFE	575/3/60	5.8	43	7.3	15
BXZA045H8-	IS2	ZS33KAE-PFV	208-230/1/60	25.6	146	32.0	50
	IT3	ZS33KAE-TF5	208-230/3/60	22.3	114	27.9	50
	IT4	ZS33KAE-TFD	460/3/60	10.0	52	12.5	20
	IT5	ZS33KAE-TFE	575/3/60	6.9	39.5	8.6	15
BXZA050H8-	IS2	ZB38KCE-PFV	208-230/1/60	31.1	175	38.9	70
	IT3	ZB38KCE-TF5	208-230/3/60	22.1	128	27.6	45
	IT4	ZB38KCE-TFD	460/3/60	9.6	63	12.0	20
	IT5	ZB38KCE-TFE	575/3/60	7.1	50	8.9	15
BXZA060H8-	IT3	ZB45KCE-TF5	208-230/3/60	22.5	156	28.1	50
	IT4	ZB45KCE-TFD	460/3/60	11.5	75	14.4	25
	IT5	ZB45KCE-TFE	575/3/60	7.9	54	9.9	15

MODEL BXZA		COMPRESSOR MODEL NO.	POWER SUPPLY	COMPRESSOR		UNIT	
				RLA	LRA	MCA	MOP
BXZA008L8-	IS2	ZF03KAE-PFV	208-230/1/60	6.1	43	7.6	15
	IT3	ZF03KAE-TF5	208-230/3/60	4.1	32	5.1	15
BXZA010L8-	IS2	ZF04KAE-PFV	208-230/1/60	7.4	40	9.3	15
	IT3	ZF04KAE-TF5	208-230/3/60	6.6	55	8.3	15
BXZA015L8-	IS2	ZF05KAE-PFV	208-230/1/60	8.7	55	10.9	15
	IT3	ZF05KAE-TF5	208-230/3/60	7.4	58	9.3	15
BXZA020L8-	IS2	ZF07KAE-PFV	208-230/1/60	13.9	75	17.4	30
	IT3	ZF07KAE-TF5	208-230/3/60	8.6	58	10.8	15
BXZA025L8-	IS2	ZF08K4E-PFV	208-230/1/60	16.4	73	20.5	35
	IT3	ZF08K4E-TF5	208-230/3/60	9.6	63	12.0	20
	IT4	ZF08K4E-TFD	460/3/60	5.0	31	6.3	15
BXZA030L8-	IS2	ZF09K4E-PFV	208-230/1/60	16.4	88	20.5	35
	IT3	ZF09K4E-TF5	208-230/3/60	11.1	77	13.9	20
	IT4	ZF09K4E-TFD	460/3/60	5.0	39	6.3	15
	IT5	ZF09K4E-TFE	575/3/60	4.3	31	5.4	15
BXZA035L8-	IS2	ZF11K4E-PFV	208-230/1/60	20.8	109	26.0	45
	IT3	ZF11K4E-TF5	208-230/3/60	14.2	88	17.8	25
	IT4	ZF11K4E-TFD	460/3/60	7.1	44	8.9	15
	IT5	ZF11K4E-TFE	575/3/60	5.0	34	6.3	15
BXZA045L8-	IS2	ZF13K4E-PFV	208-230/1/60	26.8	129	33.5	50
	IT3	ZF13K4E-TF5	208-230/3/60	15.0	99	18.8	30
	IT4	ZF13K4E-TFD	460/3/60	8.2	49.5	10.3	15
	IT5	ZF13K4E-TFE	575/3/60	8.2	40	10.3	15
BXZA055L8-	IS2	ZF15K4E-PFV	208-230/1/60	31.8	169	39.8	60
	IT3	ZF15K4E-TF5	208-230/3/60	21.4	123	26.8	40
	IT4	ZF15K4E-TFD	460/3/60	9.6	62	12.0	20
	IT5	ZF15K4E-TFE	575/3/60	7.9	50	9.9	15
BXZA060L8-	IT3	ZF18K4E-TF5	208-230/3/60	23.9	156	29.9	50
	IT4	ZF18K4E-TFD	460/3/60	9.3	75	11.6	20
	IT5	ZF18K4E-TFE	575/3/60	7.9	54	9.9	15



**REFER TO NEXT PAGE FOR
DIMENSIONAL DATA FOR SPECIFIC MODELS**

BXH**DIMENSIONAL DATA****60Hz**

MODEL BXHA	WIDTH		DEPTH		HEIGHT	
	Inches	mm	Inches	mm	Inches	mm
BXHA015H7	36 3/8	924	30 3/8	772	19 1/2	495
BXHA020H7	36 3/8	924	30 3/8	772	19 1/2	495
BXHA025H7	36 3/8	924	30 3/8	772	19 1/2	495
BXHA030H7	43 7/8	1114	32 7/8	835	30	762
BXHA035H7	43 7/8	1114	32 7/8	835	30	762
BXHA040H7	43 7/8	1114	32 7/8	835	30	762
BXHA050H7	43 7/8	1114	32 7/8	835	30	762
BXHA006M8	24 7/8	632	30 3/8	772	19	483
BXHA008M8	24 7/8	632	30 3/8	772	19	483
BXHA009M8	24 7/8	632	30 3/8	772	19	483
BXHA010M8	24 7/8	632	30 3/8	772	19	483
BXHA011M8	24 7/8	632	30 3/8	772	19	483
BXHA013M8	36 3/8	924	30 3/8	772	19 1/2	495
BXHA015M6	36 3/8	924	30 3/8	772	19 1/2	495
BXHA020M6	36 3/8	924	30 3/8	772	19 1/2	495
BXHA025M6	36 3/8	924	30 3/8	772	19 1/2	495
BXHA030M6	43 7/8	1114	32 7/8	835	30	762
BXHA035M6	43 7/8	1114	32 7/8	835	30	762
BXHA040M6	43 7/8	1114	32 7/8	835	30	762
BXHA050M6	43 7/8	1114	32 7/8	835	30	762
BXHA006L6	24 7/8	632	30 3/8	772	19	483
BXHA008L6	24 7/8	632	30 3/8	772	19	483
BXHA010L6	24 7/8	632	30 3/8	772	19	483
BXHA020L6	24 7/8	632	30 3/8	772	19	483
BXHA025L6	36 3/8	924	30 3/8	772	19 1/2	495
BXHA030L6	36 3/8	924	30 3/8	772	19 1/2	495

BXS**DIMENSIONAL DATA****60Hz**

MODEL BXSA	WIDTH		DEPTH		HEIGHT	
	Inches	mm	Inches	mm	Inches	mm
BXSA010M8	24 7/8	632	30 3/8	772	19	483
BXSA020M8	36 3/8	924	30 3/8	772	19 1/2	495
BXSA021M8	36 3/8	924	30 3/8	772	19 1/2	495
BXSA030M8	43 7/8	1114	32 7/8	835	30	762
BXSA005L6	24 7/8	632	30 3/8	772	16 1/2	419
BXSA008L6	24 7/8	632	30 3/8	772	16 1/2	419
BXSA010L6	24 7/8	632	30 3/8	772	16 1/2	419
BXSA015L6	36 3/8	924	30 3/8	772	19 1/2	495
BXSA020L6	36 3/8	924	30 3/8	772	19 1/2	495
BXSA021L6	36 3/8	924	30 3/8	772	19 1/2	495
BXSA030L6	43 7/8	1114	32 7/8	835	30	762
BXSA032L6	43 7/8	1114	32 7/8	835	30	762

BXZ**DIMENSIONAL DATA****60Hz**

MODEL BXZA	WIDTH		DEPTH		HEIGHT	
	Inches	mm	Inches	mm	Inches	mm
BXZA007H8	24 7/8	632	30 3/8	772	19	483
BXZA008H8	24 7/8	632	30 3/8	772	19	483
BXZA009H8	24 7/8	632	30 3/8	772	19	483
BXZA010H8	36 3/8	924	30 3/8	772	19 1/2	495
BXZA011H8	36 3/8	924	30 3/8	772	19 1/2	495
BXZA015H8	36 3/8	924	30 3/8	772	19 1/2	495
BXZA020H8	36 3/8	924	30 3/8	772	19 1/2	495
BXZA025H8	36 3/8	924	30 3/8	772	19 1/2	495
BXZA030H8	43 7/8	1114	32 7/8	835	30	762
BXZA035H8	43 7/8	1114	32 7/8	835	30	762
BXZA040H8	43 7/8	1114	32 7/8	835	30	762
BXZA045H8	43 7/8	1114	32 7/8	835	30	762
BXZA050H8	43 7/8	1114	32 7/8	835	30	762
BXZA060H8	43 7/8	1114	32 7/8	835	30	762
BXZA008L8	24 7/8	632	30 3/8	772	19	483
BXZA010L8	24 7/8	632	30 3/8	772	19	483
BXZA015L8	24 7/8	632	30 3/8	772	19	483
BXZA020L8	36 3/8	924	30 3/8	772	19 1/2	495
BXZA025L8	36 3/8	924	30 3/8	772	19 1/2	495
BXZA030L8	36 3/8	924	30 3/8	772	19 1/2	495
BXZA035L8	36 3/8	924	30 3/8	772	19 1/2	495
BXZA045L8	43 7/8	1114	32 7/8	835	30	762
BXZA055L8	43 7/8	1114	32 7/8	835	30	762
BXZA060L8	43 7/8	1114	32 7/8	835	30	762

MODEL BXHA	FIELD CONNECTIONS				WATER CONNECTION		RECEIVER CAPACITY 90% FULL *		SHIPPING WEIGHT	
	SUCTION		LIQUID		In.	mm	Lbs.	Kgs	Lbs.	Kgs
	In.	mm	In.	mm						
BXHA015H7	5/8	16	3/8	10	5/8	16	12.0	5.4	240	109
BXHA020H7	5/8	16	3/8	10	3/4	19	12.0	5.4	240	109
BXHA025H7	7/8	22	3/8	10	7/8	22	15.0	6.8	250	113
BXHA030H7	7/8	22	1/2	13	7/8	22	23.0	10.4	330	150
BXHA035H7	7/8	22	1/2	13	7/8	22	23.0	10.4	330	150
BXHA040H7	1 1/8	29	1/2	13	7/8	22	23.0	10.4	340	154
BXHA050H7	1 1/8	29	1/2	13	1 1/8	29	23.0	10.4	350	159
BXHA006M8	5/8	16	3/8	10	1/2	13	5.4	2.4	120	54
BXHA008M8	5/8	16	3/8	10	1/2	13	5.4	2.4	120	54
BXHA009M8	5/8	16	3/8	10	1/2	13	5.4	2.4	120	54
BXHA010M8	5/8	16	3/8	10	1/2	13	5.4	2.4	140	64
BXHA011M8	5/8	16	3/8	10	1/2	13	5.4	2.4	140	64
BXHA013M8	5/8	16	3/8	10	5/8	16	11.3	5.1	240	109
BXHA015M6	5/8	16	3/8	10	5/8	16	11.3	5.1	240	109
BXHA020M6	5/8	16	3/8	10	5/8	16	11.3	5.1	240	109
BXHA025M6	7/8	22	1/2	13	3/4	19	14.4	6.5	240	109
BXHA030M6	7/8	22	1/2	13	7/8	22	21.5	9.8	320	145
BXHA035M6	7/8	22	1/2	13	7/8	22	21.5	9.8	320	145
BXHA040M6	7/8	22	1/2	13	7/8	22	21.5	9.8	320	145
BXHA050M6	7/8	22	1/2	13	1 1/8	29	21.5	9.8	330	150
BXHA006L6	1/2	13	3/8	10	1/2	13	5.4	2.4	110	50
BXHA008L6	5/8	16	3/8	10	1/2	13	5.4	2.4	160	73
BXHA010L6	7/8	22	3/8	10	1/2	13	5.4	2.4	160	73
BXHA020L6	7/8	22	3/8	10	1/2	13	5.4	2.4	160	73
BXHA025L6	7/8	22	3/8	10	5/8	16	11.3	5.1	240	109
BXHA030L6	7/8	22	1/2	13	3/4	29	14.4	6.5	250	113

*** NOTE ON ALTERNATE REFRIGERANTS:**

* PUBLISHED RECEIVER CAPACITY IS BASED ON **R404A** ON MODELS USING "8" AS REFRIGERANT CODE. FOR ALTERNATE REFRIGERANTS, MULTIPLY **R404A** VALUE BY THE APPROPRIATE VALUE BELOW:

R407A	R407C	R448A	R507	R22
1.10	1.10	1.05	1.00	1.15

- For R449A, use R448A data.

MODEL BXSA	FIELD CONNECTIONS				WATER CONNECTION		RECEIVER CAPACITY 90% FULL *		SHIPPING WEIGHT	
	SUCTION		LIQUID		In.	mm	Lbs.	Kgs	Lbs.	Kgs
	Inches	mm	Inches	mm						
BXSA010M8	5/8	16	3/8	10	1/2	13	5.4	2.4	240	109
BXSA020M8	7/8	22	1/2	13	5/8	16	14	6.4	290	132
BXSA021M8	7/8	22	1/2	13	3/4	19	14	6.3	350	159
BXSA030M8	7/8	22	1/2	13	7/8	22	22	10.0	410	186
BXSA005L6	1/2	13	3/8	10	1/2	13	5.4	2.4	220	100
BXSA008L6	5/8	16	3/8	10	1/2	13	5.4	2.4	240	109
BXSA010L6	7/8	22	3/8	10	1/2	13	5.4	2.4	260	118
BXSA015L6	7/8	22	3/8	10	5/8	16	14	6.4	280	127
BXSA020L6	7/8	22	3/8	10	5/8	16	14	6.4	350	159
BXSA021L6	7/8	22	1/2	13	5/8	16	14	6.4	350	159
BXSA030L6	1 1/8	29	1/2	13	3/4	19	22	10.0	420	191
BXSA032L6	1 1/8	29	1/2	13	3/4	19	22	10.0	420	191

MODEL BXZA	FIELD CONNECTIONS				WATER CONNECTION		RECEIVER CAPACITY 90% FULL *		SHIPPING WEIGHT	
	SUCTION		LIQUID		In.	mm	Lbs.	Kgs	Lbs.	Kgs
	Inches	mm	Inches	mm						
XZA008H8	5/8	16	3/8	10	1/2	13	5.4	2.4	115	52
XZA008H8	5/8	16	3/8	10	1/2	13	5.4	2.4	115	52
XZA009H8	5/8	16	3/8	10	1/2	13	5.4	2.4	115	52
XZA010H8	5/8	16	3/8	10	5/8	16	5.4	2.4	115	52
XZA011H8	5/8	16	3/8	10	5/8	16	5.4	2.4	125	57
XZA015H8	7/8	22	3/8	10	5/8	16	11.0	5.0	150	68
XZA020H8	7/8	22	3/8	10	3/4	19	11.0	5.0	250	113
XZA025H8	7/8	22	1/2	13	7/8	22	14.0	6.4	250	113
XZA030H8	7/8	22	1/2	13	7/8	22	22.0	10.0	265	120
XZA035H8	7/8	22	1/2	13	7/8	22	22.0	10.0	330	150
XZA040H8	1 1/8	29	1/2	13	7/8	22	22.0	10.0	330	150
XZA045H8	1 1/8	29	1/2	13	7/8	22	22.0	10.0	340	154
XZA050H8	1 1/8	29	1/2	13	7/8	22	22.0	10.0	340	154
XZA060H8	1 1/8	29	1/2	13	1 1/8	29	22.0	10.0	350	159
XZA008L8	5/8	16	3/8	10	1/2	13	5.4	2.4	115	52
XZA008L8	5/8	16	3/8	10	1/2	13	5.4	2.4	115	52
XZA009L8	5/8	16	3/8	10	1/2	13	5.4	2.4	115	52
XZA020L8	7/8	22	3/8	10	5/8	16	11.0	5.0	200	91
XZA025L8	7/8	22	3/8	10	5/8	16	14.0	6.4	220	100
XZA030L8	7/8	22	3/8	10	5/8	16	14.0	6.4	230	104
XZA035L8	7/8	22	1/2	13	3/4	19	22.0	10.0	240	109
XZA045L8	1 1/8	29	1/2	13	3/4	19	22.0	10.0	290	132
XZA055L8	1 1/8	29	1/2	13	7/8	22	22.0	10.0	290	132
XZA060L8	1 1/8	29	1/2	13	7/8	22	22.0	10.0	300	136

*** NOTE ON ALTERNATE REFRIGERANTS:**

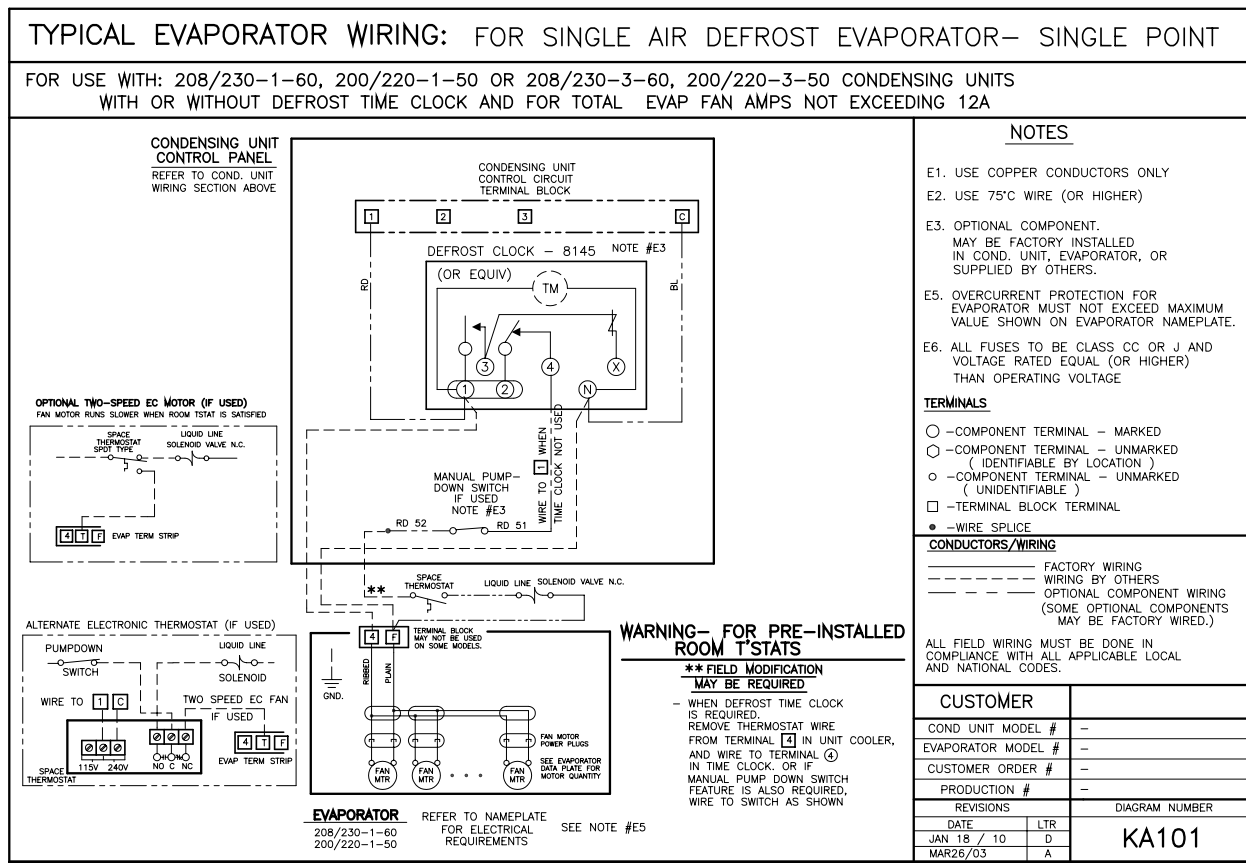
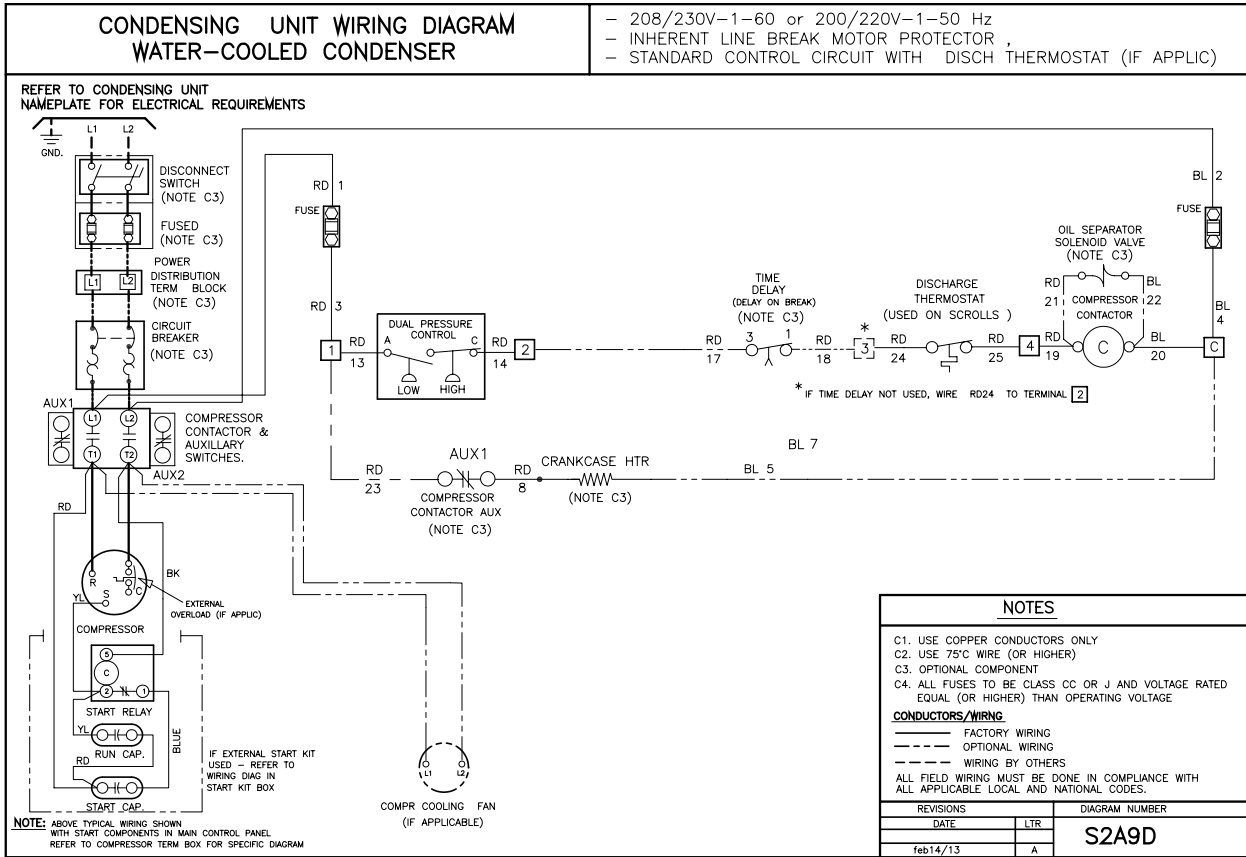
* PUBLISHED RECEIVER CAPACITY IS BASED ON **R404A** ON MODELS USING "8" AS REFRIGERANT CODE.
FOR ALTERNATE REFRIGERANTS, MULTIPLY **R404A** VALUE BY THE APPROPRIATE VALUE BELOW:

R407A	R407C	R448A	R507	R22
1.10	1.10	1.05	1.00	1.15

- For R449A, use R448A data.

TYPICAL SYSTEM WIRING DIAGRAM

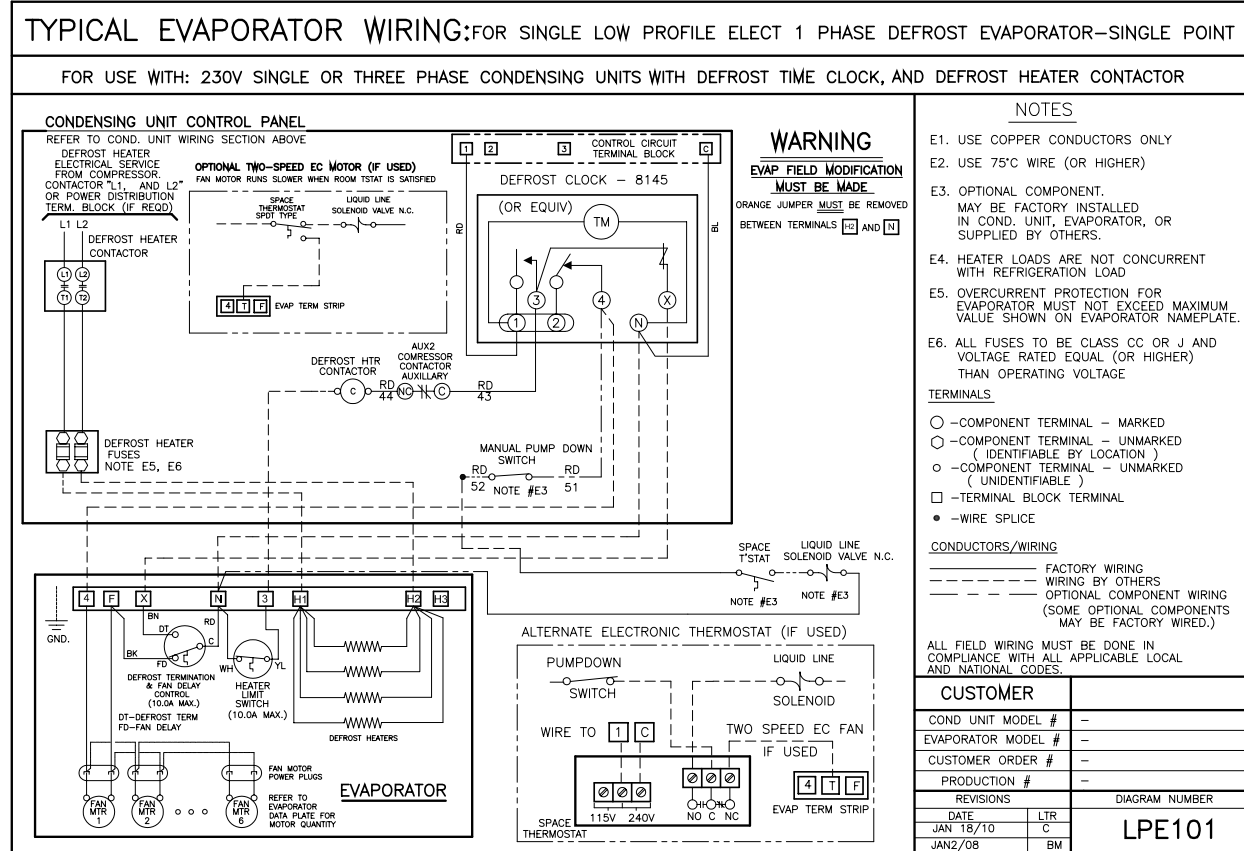
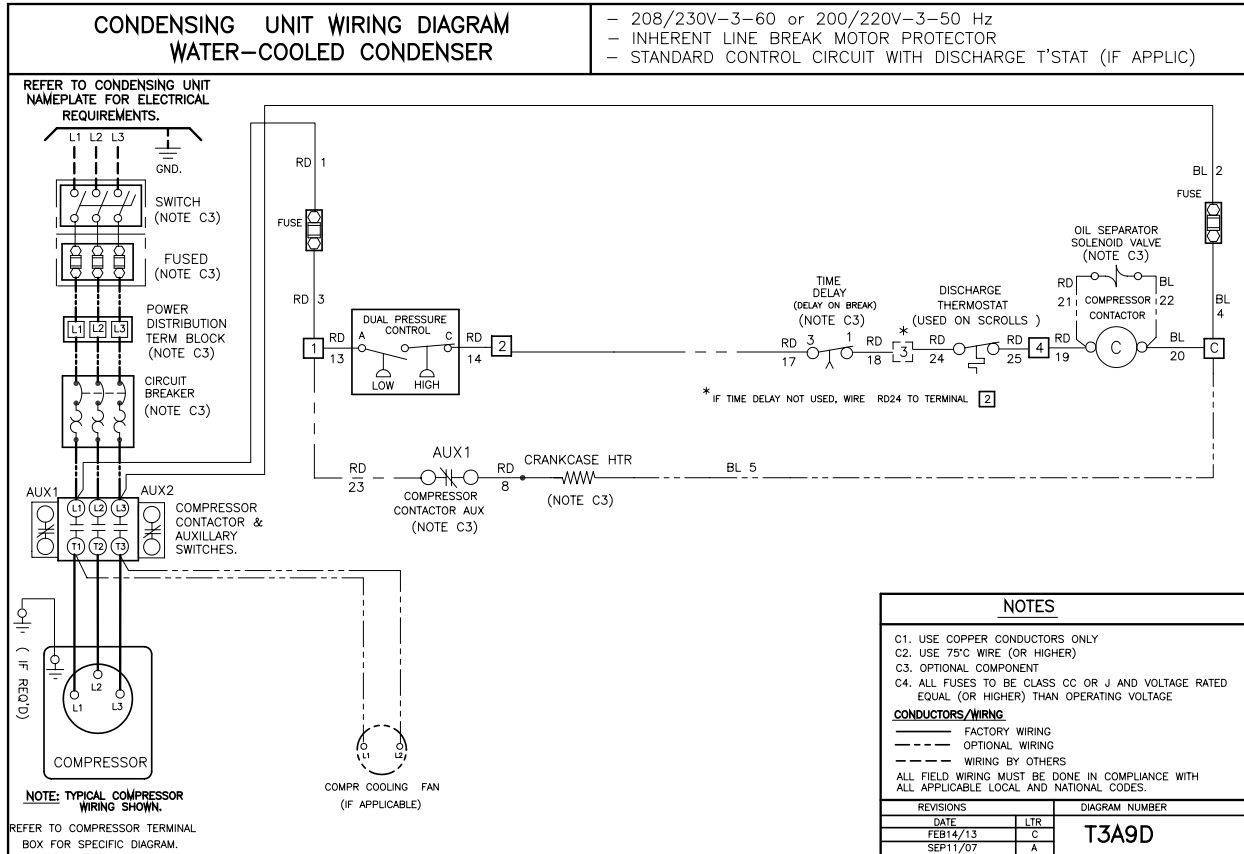
208-230/3/60 Unit with Single Air Defrost Evaporator



TYPICAL SYSTEM WIRING DIAGRAM

208-230/3/60 Unit

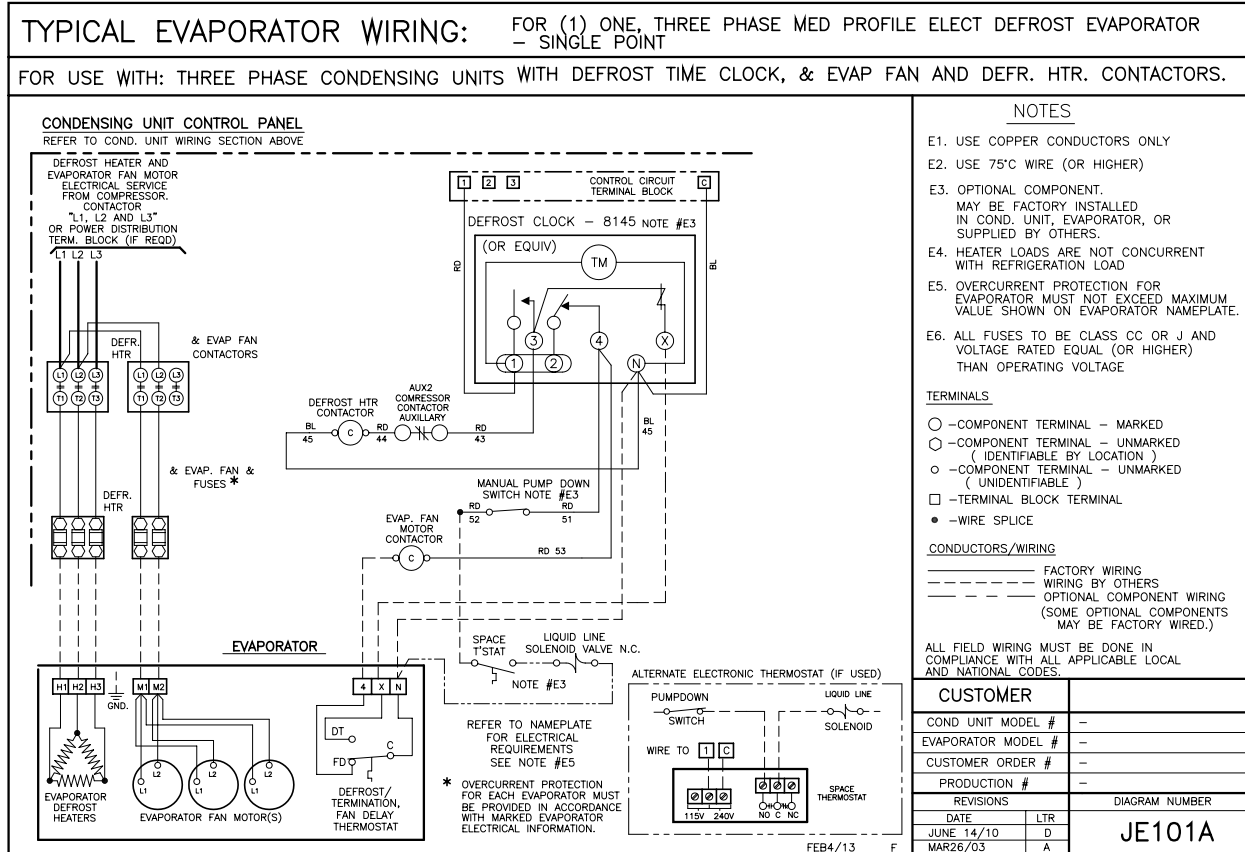
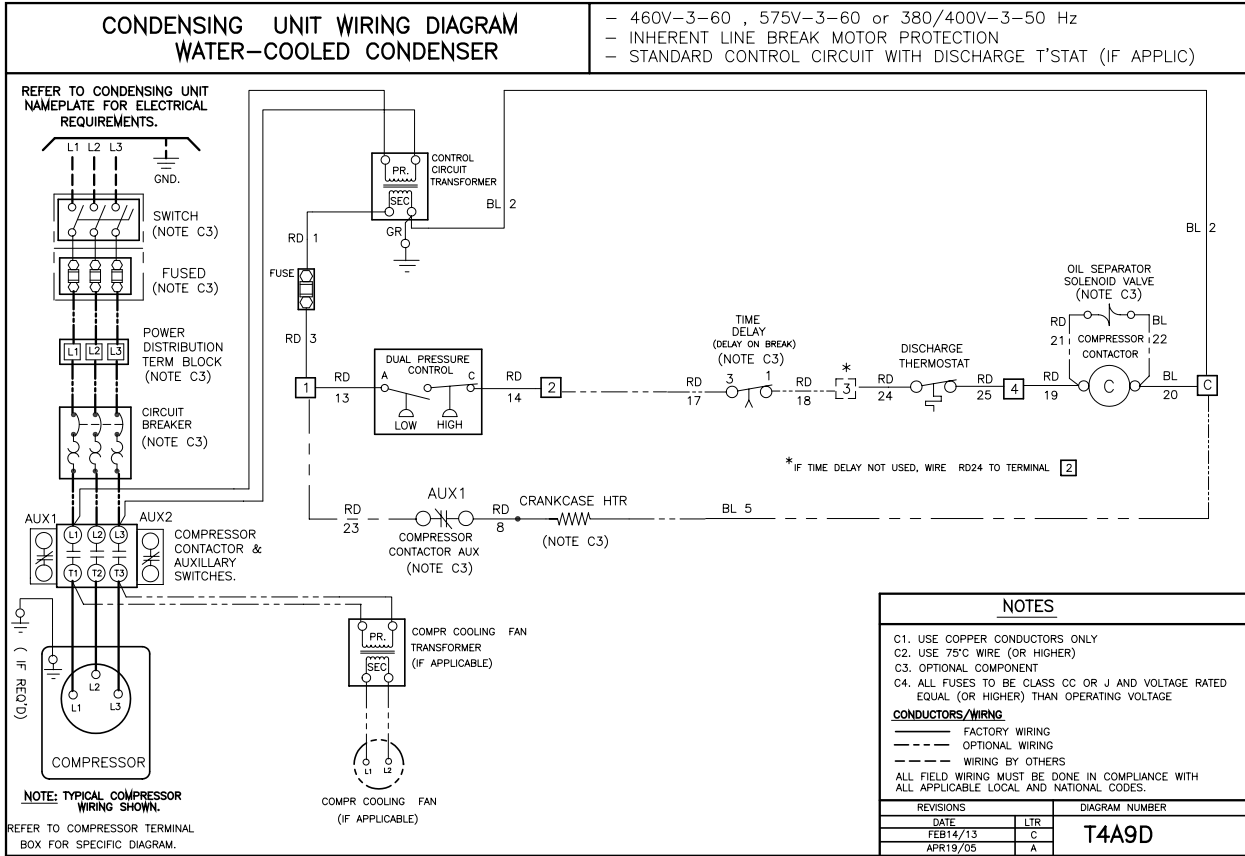
with Single Low Profile Electric Defrost Evaporator



TYPICAL SYSTEM WIRING DIAGRAM

460/3/60 or 575/3/60 Unit

with Single Low Profile Electric Defrost Evaporator



NOTES

NOTES

 <p>PRODUCT SUPPORT</p>	<p><i>web:</i> b-rp.ca/bx <i>email:</i> rcu-wccu@b-rp.ca <i>call:</i> 1-844-893-3222 x523</p>
 <p>TROUBLESHOOTING</p>	<p><i>email:</i> troubleshooting@b-rp.ca <i>call:</i> 1-844-893-3222 x529</p>
 <p>SERVICE PARTS</p>	<p><i>web:</i> b-rp.ca/parts <i>email:</i> parts@b-rp.ca <i>call:</i> 1-844-893-3222 x523</p>
 <p>WARRANTY</p>	<p><i>web:</i> b-rp.ca/warranty <i>email:</i> warranty@b-rp.ca <i>call:</i> 1-844-893-3222 x501</p>
 <p>ORDERS</p>	<p><i>email:</i> orders@b-rp.ca <i>call:</i> 1-844-893-3222 x501</p>
 <p>SHIPPING</p>	<p><i>email:</i> shipping@b-rp.ca <i>call:</i> 1-844-893-3222 x503</p>

		<p>DISTRIBUTED BY:</p> <div style="border: 1px solid black; height: 100px; width: 100%;"></div>
<p>Bally Refrigeration Morehead City, NC • Brantford, ON • Longview, TX 1-800-242-2559 ballysales@ballyrefboxes.com www.ballyrefboxes.com</p>		

Due to the manufacturer's policy of continuous product improvement, we reserve the right to make changes without notice.